

Η ΝΕΑ ΝΕΑ ΑΛΙΚΑΡΝΑΣΣΟΣ

ΤΟ ΝΕΟ ΔΙΕΘΝΕΣ ΑΕΡΟΔΡΟΜΙΟ Ν. ΚΑΖΑΝΤΖΑΚΗΣ & ΟΙ ΑΣΤΙΚΕΣ ΤΟΥ ΠΡΟΕΚΤΑΣΕΙΣ

ΔΗΜΗΤΡΗΣ ΚΟΥΤΣΟΥΜΠΑΣ

ΕΠΙΤΡΟΠΗ

ΓΙΑΝΝΟΥΔΗΣ Σ. (ΕΠΙΒΛΕΠΩΝ)

ΔΙΜΕΛΛΗ Δ.

ΠΑΡΘΕΝΙΟΣ Π.

2019

HERAKLION INTERNATIONAL AIRPORT N. KAZANTZAKIS

35°20'27.1"N 25°10'24.0"E







of Macedonia

Albania

Greece

Corfu International Airport

Ioannina National Airport

Aktion National Airport

Kefalonia Cephalonia International Airport

Zakynthos International Airport

Kalamata International Airport

Kithira Island National Airport

Chania International Airport

Heraklion International Airport

Karpathos Island National Airport

Thessaloniki International Airport

Skiathos Island National Airport

Athens International Airport

Mykonos Island National Airport

Thira National Airport

Alexandroupolis International Airport

Lemnos International Airport

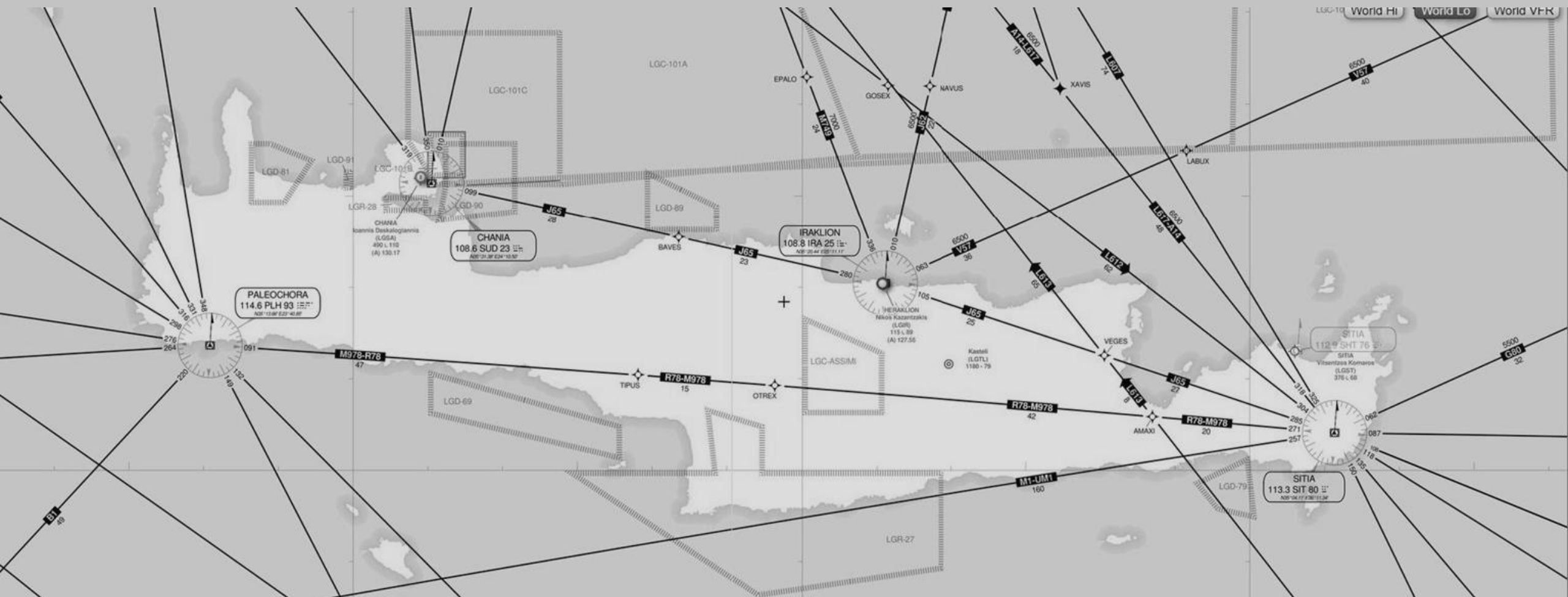
Mytilene International Airport

Chios Island National Airport

Samos International Airport

Kos Island International Airport

Rhodes International Airport



Passengers

1990: 1.2 billion



2010: 2.7 billion



2030: 5.9 billion



Aircraft movements



1990:
14.8 million

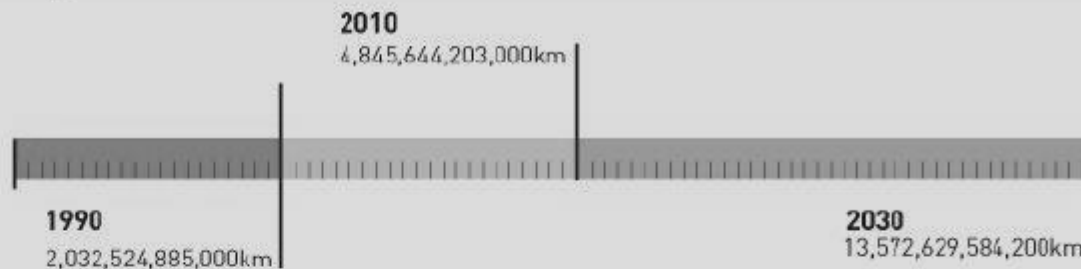


2010:
26 million

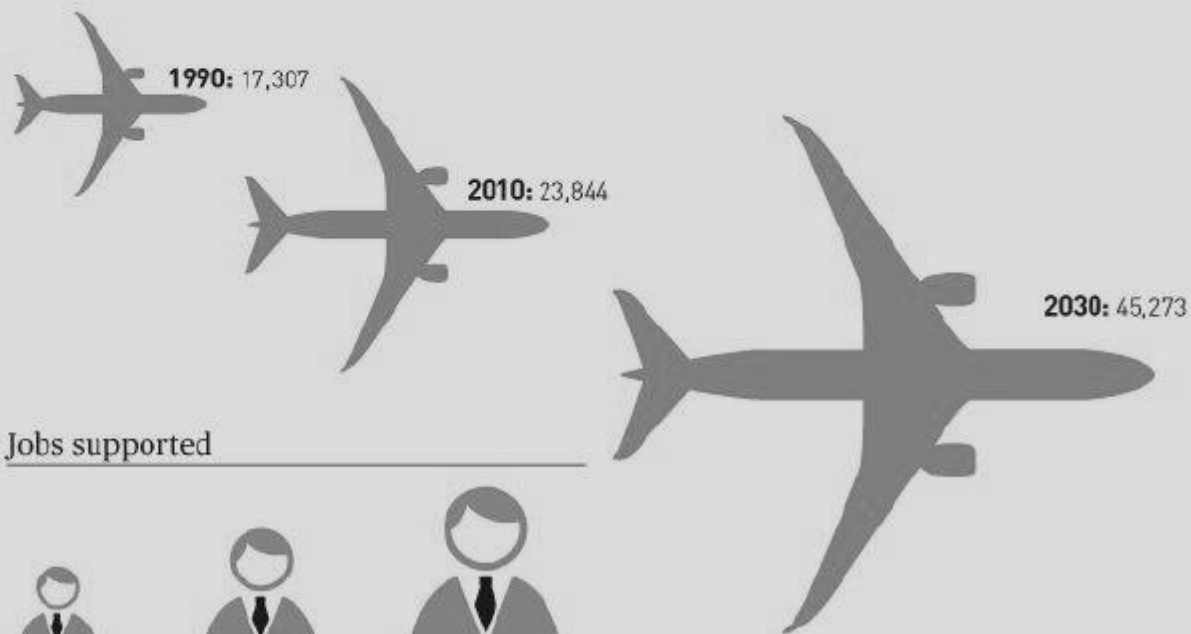


2030:
48.7 million

Passenger kilometres flown



Aircraft in service



Jobs supported



INTRA



ARR

DEP

ARR

DEP

↓	1994	5,565	234,655	229,642	4,371	419
↑	1995	5,503	223,649	215,067	4,312	515
↑	1996	7,137	274,682	265,003	3,536	411
↓	1997	9,542	351,085	342,985	3,485	538
↑	1998	10,222	334,247	326,077	3,552	535
↑	1999	14,360	434,343	436,757	3,522	580
↑	2000	14,920	494,317	495,079	3,848	629
↓	2001	13,433	406,885	423,563	2,544	445
↓	2002	11,045	348,053	369,881	2,665	523
↑	2003	13,660	403,032	410,025	3,763	564
↑	2004	14,225	458,373	468,323	2,608	641
↓	2005	12,553	448,461	462,746	2,158	440
↑	2006	15,143	493,760	510,463	2,061	500
↑	2007	16,801	537,718	561,478	2,563	494
↑	2008	16,882	547,484	568,439	2,205	472
↑	2009	18,859	553,679	578,455	1,499	405
↓	2010	16,263	504,633	530,860	1,399	327
↓	2011	14,971	447,279	473,357	1,255	265
↓	2012	12,538	405,104	437,104	261	71
↑	2013	11,674	409,981	448,668	265	23
↑	2014	9,708	407,162	453,081	396	40
↑	2015	10,323	473,771	504,426	494	74
↑	2016	10,351	503,021	555,196	516	66

EXTRA



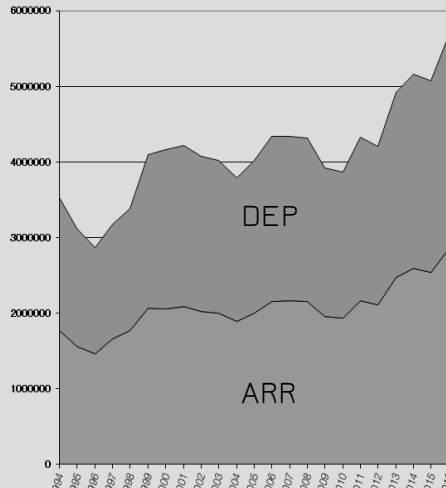
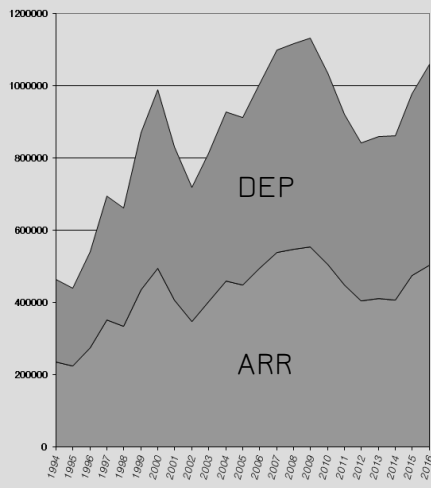
ARR

DEP

ARR

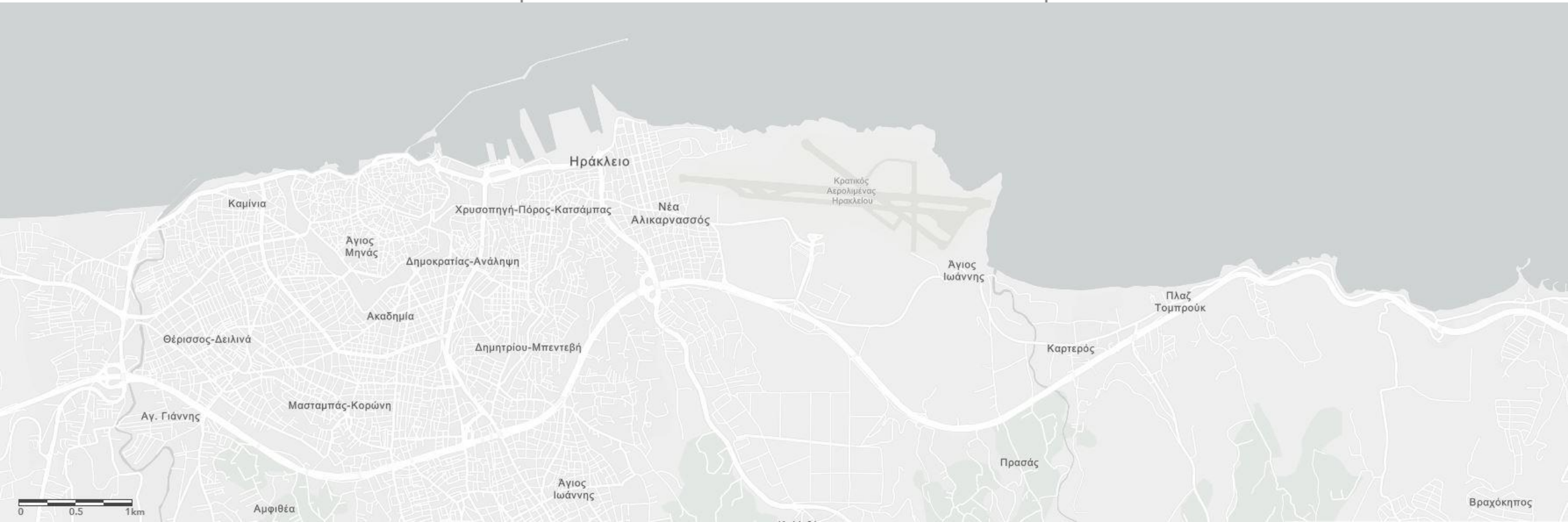
DEP

↓	1994	24,135	1,765,201	1,764,943	1	1
↓	1995	21,033	1,559,204	1,561,223	0	0
↓	1996	17,870	1,466,519	1,405,679	10	1
↑	1997	21,312	1,657,569	1,520,810	29	4
↑	1998	22,994	1,768,675	1,615,382	10	0
↑	1999	26,543	2,062,738	2,031,129	3	2
↑	2000	26,291	2,058,233	2,103,008	11	10
↑	2001	25,857	2,083,909	2,132,369	4	3
↓	2002	25,599	2,022,733	2,051,062	11	7
↓	2003	25,863	2,001,590	2,018,860	18	3
↓	2004	23,945	1,886,607	1,899,205	2	2
↑	2005	25,713	2,003,643	2,018,061	1	1
↑	2006	28,597	2,159,452	2,181,977	0	0
↑	2007	29,211	2,162,769	2,176,404	0	0
↓	2008	28,398	2,154,010	2,167,135	0	0
↓	2009	25,983	1,952,074	1,968,632	15	9
↓	2010	26,133	1,930,155	1,941,689	17	12
↑	2011	29,549	2,161,577	2,164,794	10	17
↓	2012	28,318	2,113,501	2,095,787	0	1
↑	2013	31,870	2,472,775	2,447,340	0	0
↑	2014	34,170	2,595,702	2,569,013	8	13
↓	2015	33,647	2,542,914	2,536,244	20	2
↑	2016	37,453	2,859,931	2,824,598	36	1



1981-1982	1983-1984	1985-1986	1987-1988	1989-1990	1991-1992	1993-1994	1995-1996	1997-1998	1999-2000	2001-2002	2003-2004	2005-2006	2007-2008	2009-2010	2011-2012	2013-2014	2015-2016	2017-2018	2019-2020	2021-2022	2023-2024	2025-2026	2027-2028	2029-2030	2031-2032	2033-2034	2035-2036	2037-2038	2039-2040	2041-2042	2043-2044	2045-2046	2047-2048	2049-2050	2051-2052	2053-2054	2055-2056	2057-2058	2059-2060	2061-2062	2063-2064	2065-2066	2067-2068	2069-2070	2071-2072	2073-2074	2075-2076	2077-2078	2079-2080	2081-2082	2083-2084	2085-2086	2087-2088	2089-2090	2091-2092	2093-2094	2095-2096	2097-2098	2099-2100	2101-2102	2103-2104	2105-2106	2107-2108	2109-2110	2111-2112	2113-2114	2115-2116	2117-2118	2119-2120	2121-2122	2123-2124	2125-2126	2127-2128	2129-2130	2131-2132	2133-2134	2135-2136	2137-2138	2139-2140	2141-2142	2143-2144	2145-2146	2147-2148	2149-2150	2151-2152	2153-2154	2155-2156	2157-2158	2159-2160	2161-2162	2163-2164	2165-2166	2167-2168	2169-2170	2171-2172	2173-2174	2175-2176	2177-2178	2179-2180	2181-2182	2183-2184	2185-2186	2187-2188	2189-2190	2191-2192	2193-2194	2195-2196	2197-2198	2199-2200	2201-2202	2203-2204	2205-2206	2207-2208	2209-2210	2211-2212	2213-2214	2215-2216	2217-2218	2219-2220	2221-2222	2223-2224	2225-2226	2227-2228	2229-2230	2231-2232	2233-2234	2235-2236	2237-2238	2239-2240	2241-2242	2243-2244	2245-2246	2247-2248	2249-2250	2251-2252	2253-2254	2255-2256	2257-2258	2259-2260	2261-2262	2263-2264	2265-2266	2267-2268	2269-2270	2271-2272	2273-2274	2275-2276	2277-2278	2279-2280	2281-2282	2283-2284	2285-2286	2287-2288	2289-2290	2291-2292	2293-2294	2295-2296	2297-2298	2299-2300	2301-2302	2303-2304	2305-2306	2307-2308	2309-2310	2311-2312	2313-2314	2315-2316	2317-2318	2319-2320	2321-2322	2323-2324	2325-2326	2327-2328	2329-2330	2331-2332	2333-2334	2335-2336	2337-2338	2339-2340	2341-2342	2343-2344	2345-2346	2347-2348	2349-2350	2351-2352	2353-2354	2355-2356	2357-2358	2359-2360	2361-2362	2363-2364	2365-2366	2367-2368	2369-2370	2371-2372	2373-2374	2375-2376	2377-2378	2379-2380	2381-2382	2383-2384	2385-2386	2387-2388	2389-2390	2391-2392	2393-2394	2395-2396	2397-2398	2399-2400	2401-2402	2403-2404	2405-2406	2407-2408	2409-2410	2411-2412	2413-2414	2415-2416	2417-2418	2419-2420	2421-2422	2423-2424	2425-2426	2427-2428	2429-2430	2431-2432	2433-2434	2435-2436	2437-2438	2439-2440	2441-2442	2443-2444	2445-2446	2447-2448	2449-2450	2451-2452	2453-2454	2455-2456	2457-2458	2459-2460	2461-2462	2463-2464	2465-2466	2467-2468	2469-2470	2471-2472	2473-2474	2475-2476	2477-2478	2479-2480	2481-2482	2483-2484	2485-2486	2487-2488	2489-2490	2491-2492	2493-2494	2495-2496	2497-2498	2499-2500	2501-2502	2503-2504	2505-2506	2507-2508	2509-2510	2511-2512	2513-2514	2515-2516	2517-2518	2519-2520	2521-2522	2523-2524	25
-----------	-----------	-----------	-----------	-----------	-----------	-----------	-----------	-----------	-----------	-----------	-----------	-----------	-----------	-----------	-----------	-----------	-----------	-----------	-----------	-----------	-----------	-----------	-----------	-----------	-----------	-----------	-----------	-----------	-----------	-----------	-----------	-----------	-----------	-----------	-----------	-----------	-----------	-----------	-----------	-----------	-----------	-----------	-----------	-----------	-----------	-----------	-----------	-----------	-----------	-----------	-----------	-----------	-----------	-----------	-----------	-----------	-----------	-----------	-----------	-----------	-----------	-----------	-----------	-----------	-----------	-----------	-----------	-----------	-----------	-----------	-----------	-----------	-----------	-----------	-----------	-----------	-----------	-----------	-----------	-----------	-----------	-----------	-----------	-----------	-----------	-----------	-----------	-----------	-----------	-----------	-----------	-----------	-----------	-----------	-----------	-----------	-----------	-----------	-----------	-----------	-----------	-----------	-----------	-----------	-----------	-----------	-----------	-----------	-----------	-----------	-----------	-----------	-----------	-----------	-----------	-----------	-----------	-----------	-----------	-----------	-----------	-----------	-----------	-----------	-----------	-----------	-----------	-----------	-----------	-----------	-----------	-----------	-----------	-----------	-----------	-----------	-----------	-----------	-----------	-----------	-----------	-----------	-----------	-----------	-----------	-----------	-----------	-----------	-----------	-----------	-----------	-----------	-----------	-----------	-----------	-----------	-----------	-----------	-----------	-----------	-----------	-----------	-----------	-----------	-----------	-----------	-----------	-----------	-----------	-----------	-----------	-----------	-----------	-----------	-----------	-----------	-----------	-----------	-----------	-----------	-----------	-----------	-----------	-----------	-----------	-----------	-----------	-----------	-----------	-----------	-----------	-----------	-----------	-----------	-----------	-----------	-----------	-----------	-----------	-----------	-----------	-----------	-----------	-----------	-----------	-----------	-----------	-----------	-----------	-----------	-----------	-----------	-----------	-----------	-----------	-----------	-----------	-----------	-----------	-----------	-----------	-----------	-----------	-----------	-----------	-----------	-----------	-----------	-----------	-----------	-----------	-----------	-----------	-----------	-----------	-----------	-----------	-----------	-----------	-----------	-----------	-----------	-----------	-----------	-----------	-----------	-----------	-----------	-----------	-----------	-----------	-----------	-----------	-----------	-----------	-----------	-----------	-----------	-----------	-----------	-----------	-----------	-----------	-----------	-----------	-----------	-----------	-----------	-----------	-----------	-----------	----

[illegible]



1939	ΠΡΩΤΗ ΕΠΙΒΑΤΙΚΗ ΠΡΟΣΓΕΙΩΣΗ ΣΤΟ ΔΙΑΔΡΟΜΟ 12/30
1941	ΔΙΑΚΟΠΤΕΤΑΙ Η ΠΟΛΙΤΙΚΗ ΧΡΗΣΗ
1946	ΕΠΑΝΑΛΗΨΗ ΕΠΙΒΑΤΙΚΩΝ ΔΡΟΜΟΛΟΓΙΩΝ
1953	ΟΛΟΚΛΗΡΩΣΗ ΝΕΟΥ ΔΙΑΔΡΟΜΟΥ 09/27 - ΑΡΧΙΚΟΥ ΜΗΚΟΥΣ 1850m
1968-71	ΕΡΓΑ ΕΠΕΚΤΑΣΗΣ ΤΟΥ ΔΙΑΔΡΟΜΟΥ 09/27 ΣΤΑ 2.680m ΚΑΙ ΣΥΝΤΗΡΗΣΗ ΤΟΥ 12/30
1971	ΠΡΩΤΗ ΠΤΗΣΗ CHARTER ΑΠΟ ΤΟ ΕΞΩΤΕΡΙΚΟ
2001-03	ΚΑΤΑΣΚΕΥΗ ΤΜΗΜΑΤΟΣ ΠΑΡΑΛΛΗΛΟΥ ΤΡΟΧΟΔΡΟΜΟΥ ΤΟΥ ΔΙΑΔΡΟΜΟΥ 09/27
1947	ΠΡΩΤΟΣ ΕΠΙΒΑΤΙΚΟΣ ΣΤΑΘΜΟΣ ΑΕΡΟΔΡΟΜΙΟΥ
1968	ΕΝΑΡΞΗ ΚΑΤΑΣΚΕΥΗΣ ΝΕΟΥ ΑΕΡΟΣΤΑΘΜΟΥ
1972	ΟΛΟΚΛΗΡΩΣΗ ΚΑΙ ΕΓΚΑΙΝΙΑ ΝΕΟΥ ΑΕΡΟΣΤΑΘΜΟΥ 7.370m ²
1973-75	ΚΑΤΑΣΚΕΥΗ ΚΑΤΑΦΥΓΙΩΝ ΑΕΡΟΣΚΑΦΩΝ ΚΑΙ ΤΡΟΧΟΔΡΟΜΩΝ
1988	ΕΓΚΑΙΝΙΑ ΝΕΑΣ ΑΙΘΟΥΣΑΣ ΑΦΙΞΕΩΝ-ΑΝΑΧΩΡΗΣΕΩΝ ΕΞΩΤΕΡΙΚΟΥ 900m ²
1992	ΟΛΟΚΛΗΡΩΣΗ ΝΕΑΣ ΑΙΘΟΥΣΑΣ ΑΦΙΞΕΩΝ ΕΞΩΤΕΡΙΚΟΥ
1994	ΛΕΙΤΟΥΡΓΙΑ ΝΕΑΣ ΑΙΘΟΥΣΑΣ ΑΝΑΧΩΡΗΣΕΩΝ ΕΞΩΤΕΡΙΚΟΥ 2.000m ²
1996	ΟΛΟΚΛΗΡΩΣΗ ΕΠΕΚΤΑΣΗΣ ΑΕΡΟΣΤΑΘΜΟΥ ΚΑΤΑ 11.700m ²
1997	ΑΠΟΔΟΣΗ ΣΕ ΧΡΗΣΗ ΝΕΑΣ ΑΙΘΟΥΣΑΣ ΑΝΑΧΩΡΗΣΕΩΝ ΕΞΩΤΕΡΙΚΟΥ 5.000m ²
2005	ΟΛΟΚΛΗΡΩΣΗ ΕΠΕΚΤΑΣΗΣ ΑΕΡΟΣΤΑΘΜΟΥ ΚΑΤΑ 18.985m ²
2018	ΟΛΟΚΛΗΡΩΣΗ ΕΠΕΚΤΑΣΗΣ ΑΕΡΟΣΤΑΘΜΟΥ ΚΑΤΑ 3.000m ² ΚΑΙ ΠΛΗΡΗΣ ΑΝΑΚΑΙΝΙΣΗ ΤΩΝ ΥΠΟΛΟΙΠΩΝ ΕΓΚΑΤΑΣΤΑΣΕΩΝ





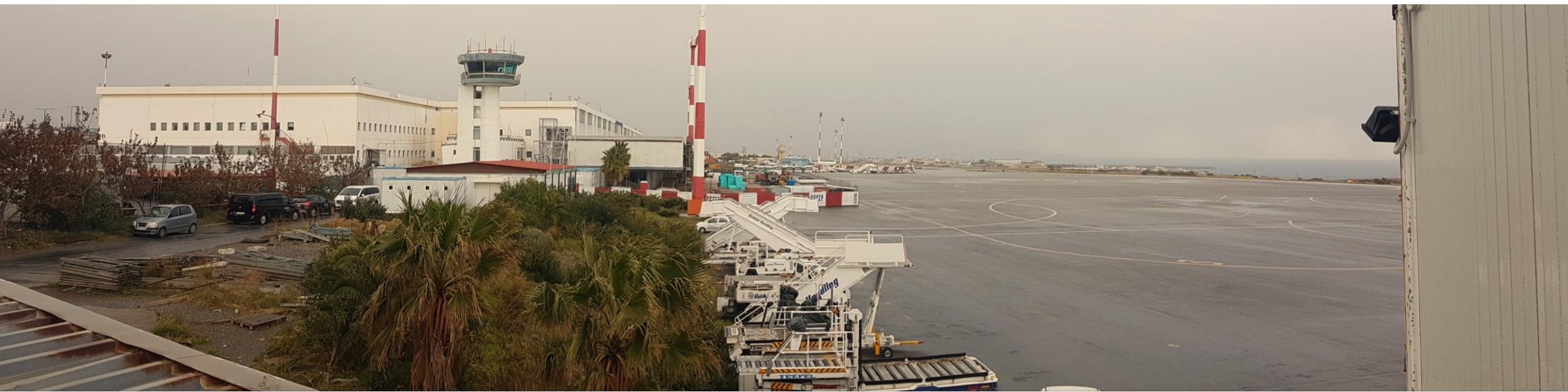


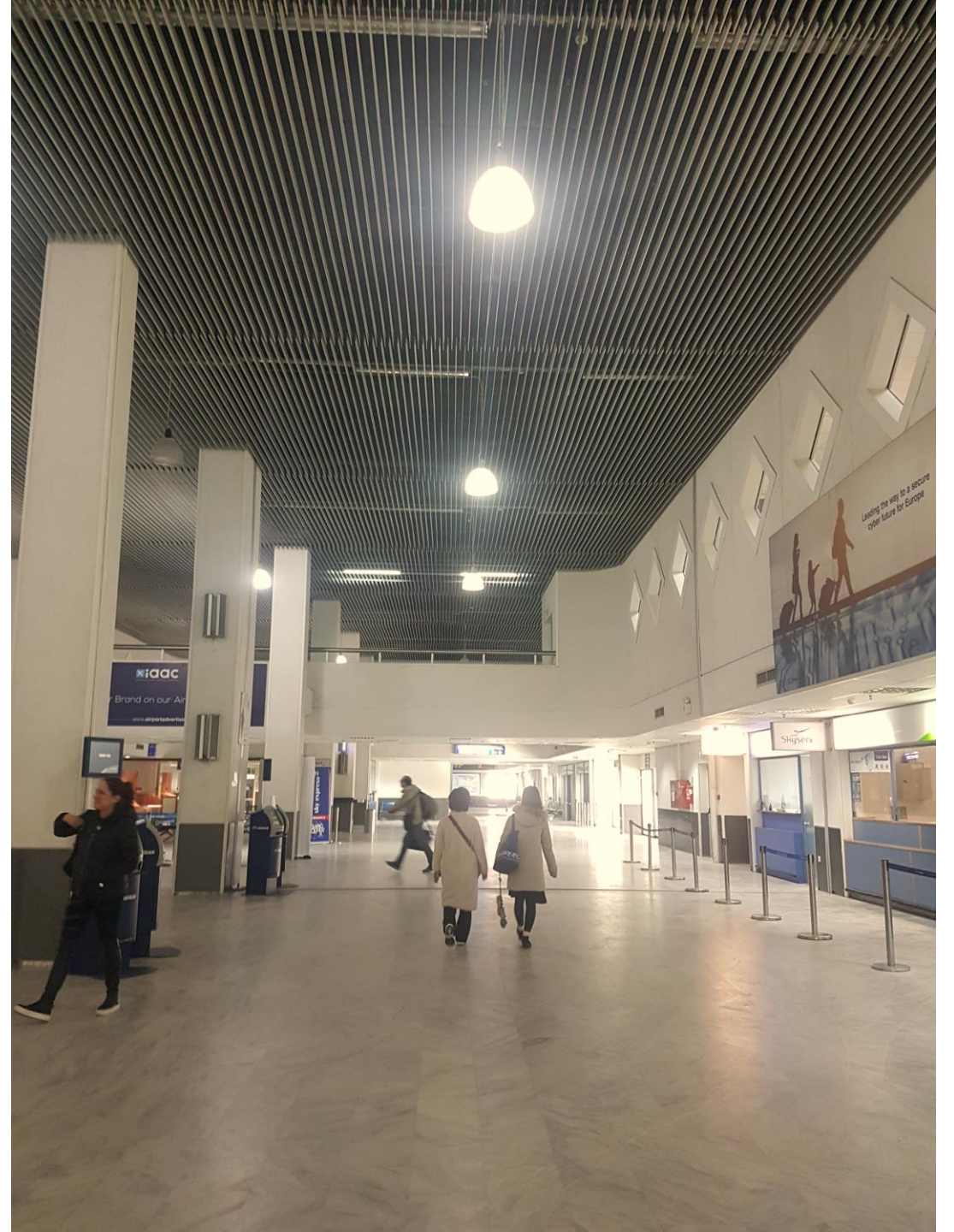
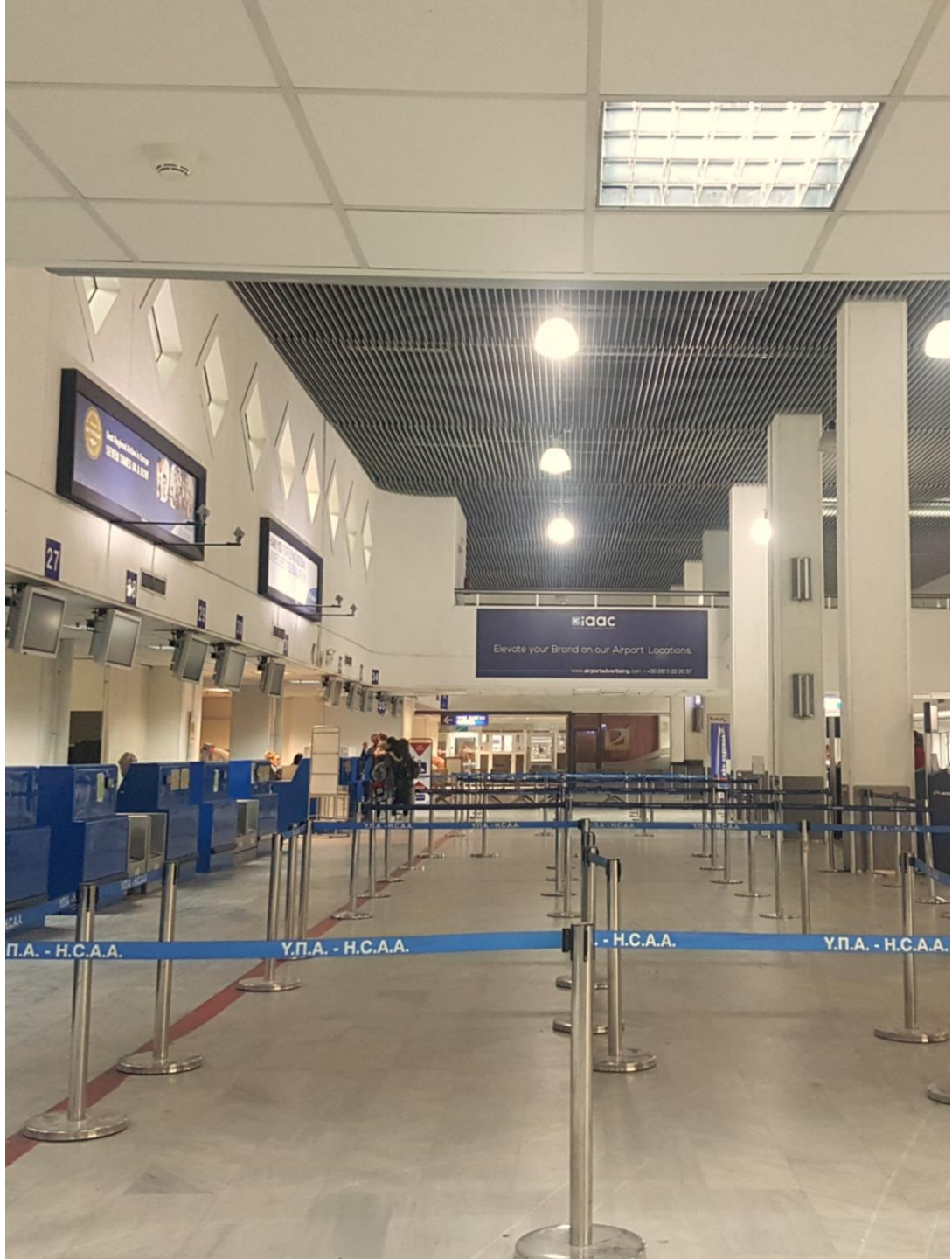










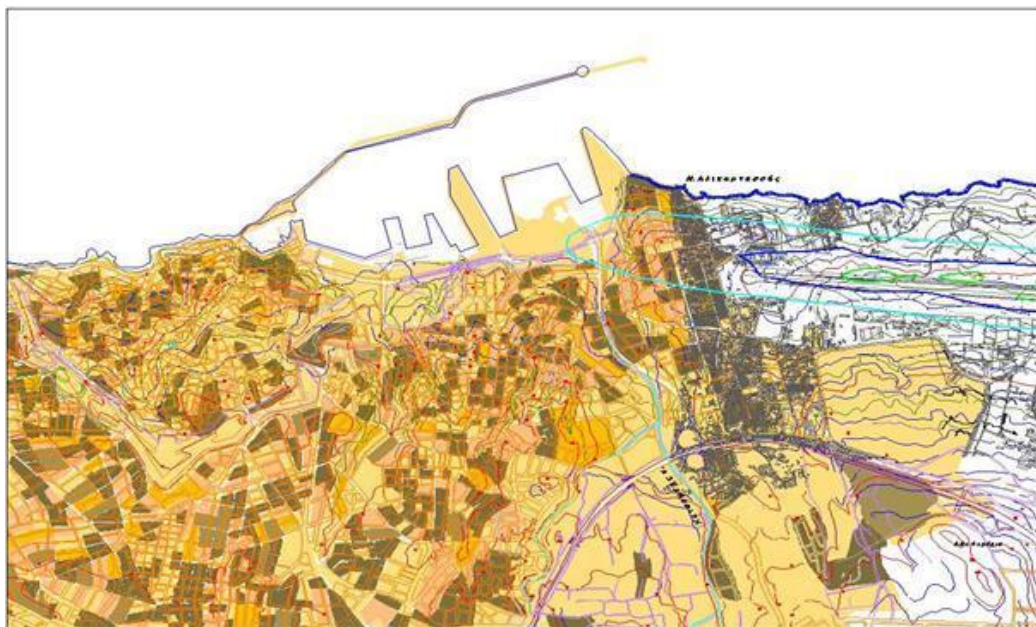








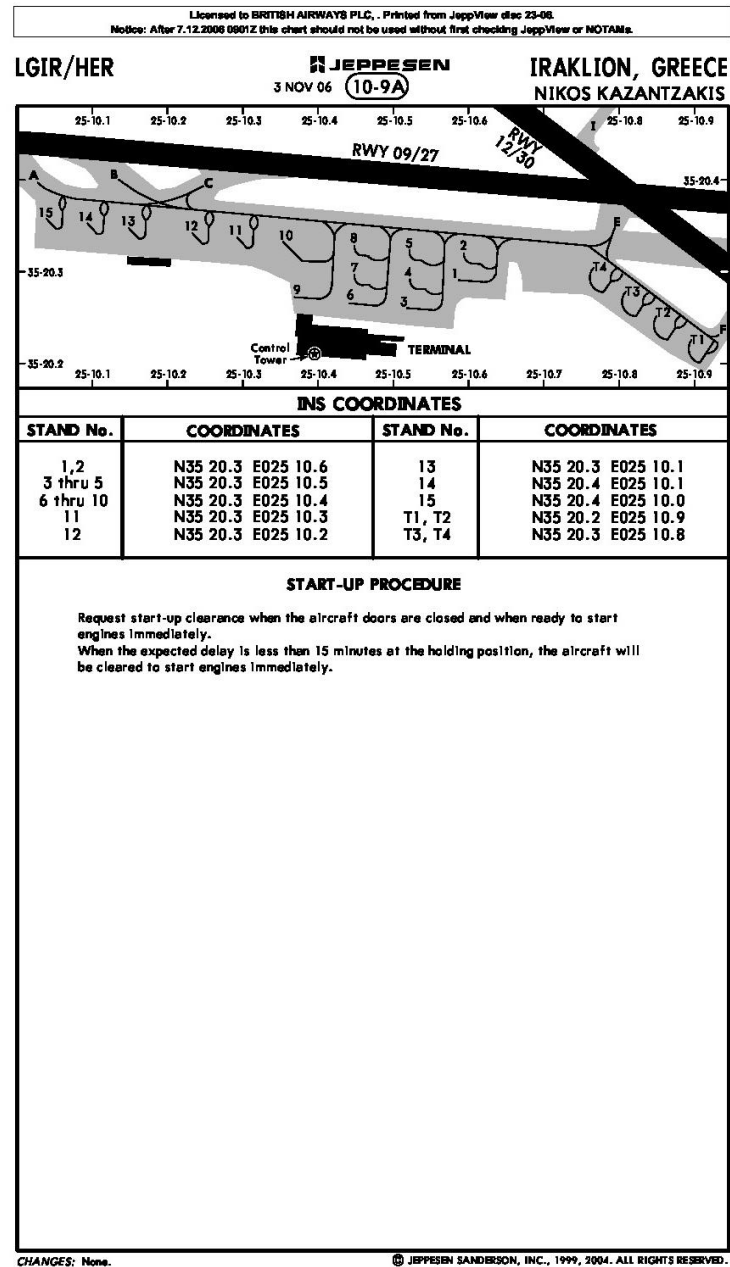
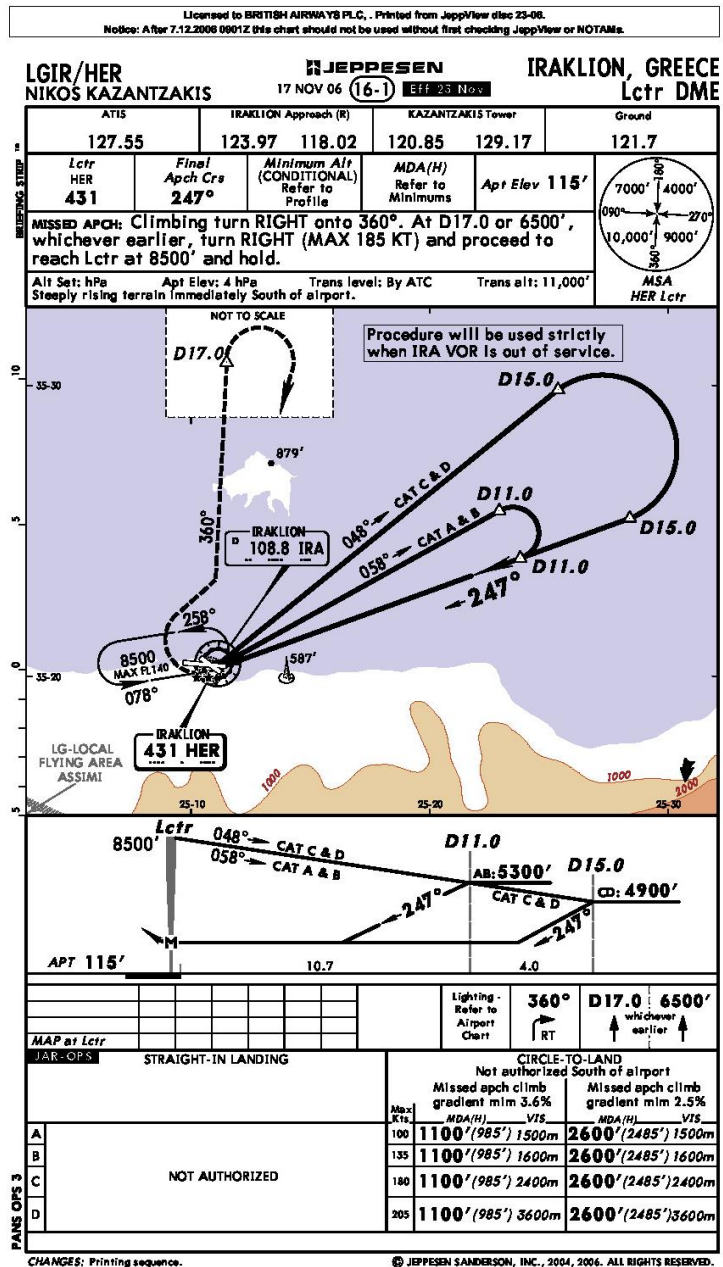
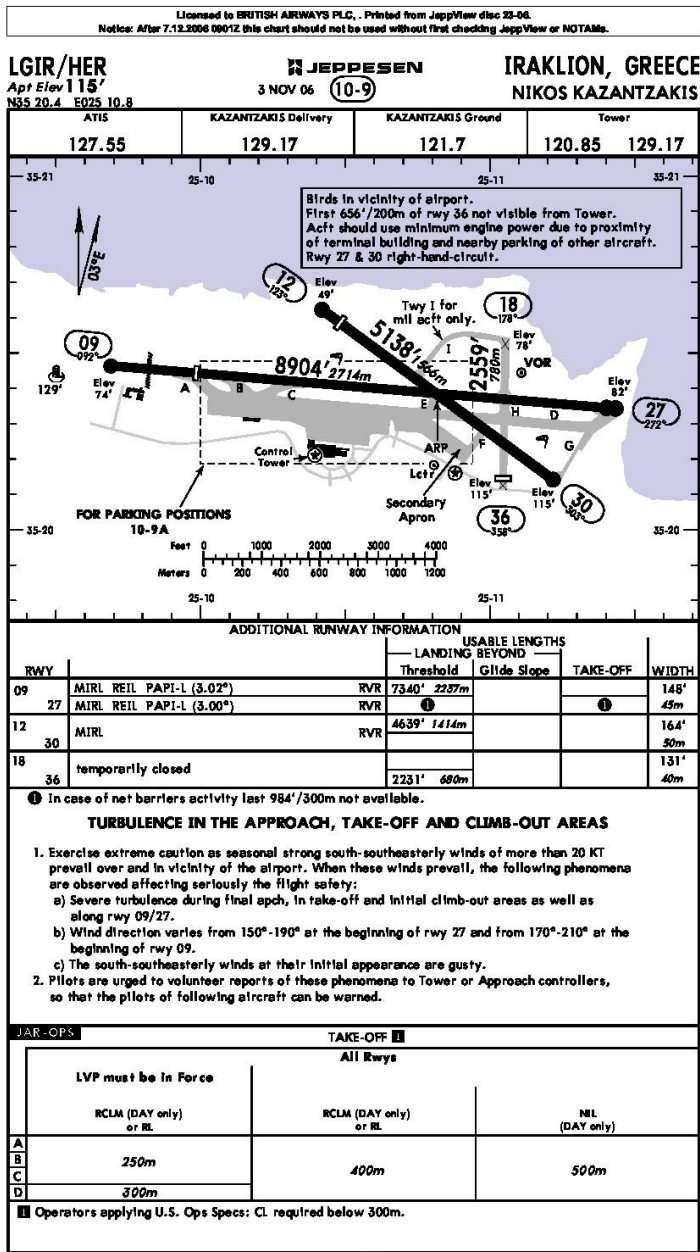




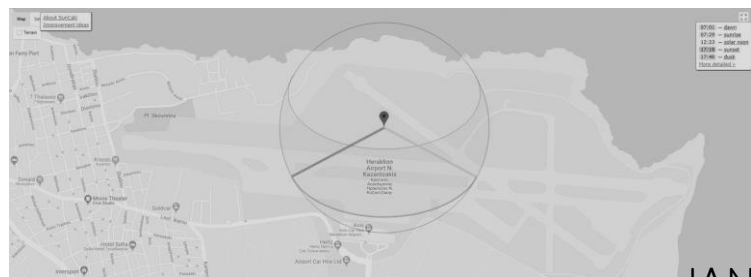
ΚΑΜΠΥΛΕΣ ΔΕΙΚΤΩΝ ΝΕΦ ΓΙΑ ΜΕΣΗ ΗΜΕΡΑ ΠΕΡΙΟΔΟΥ ΜΗ ΑΙΧΜΗΣ (2010)



ΚΑΜΠΥΛΕΣ ΔΕΙΚΤΩΝ ΝΕΦ ΓΙΑ ΜΕΣΗ ΗΜΕΡΑ ΠΕΡΙΟΔΟΥ ΑΙΧΜΗΣ (2010)







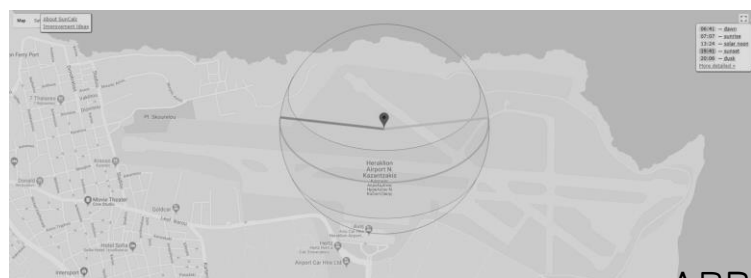
JAN



FEB



MAR



APR



MAY



JUN



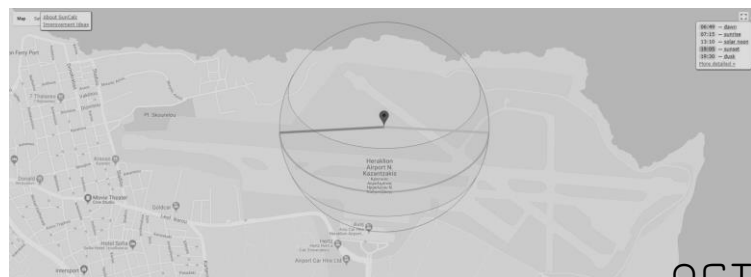
JUL



AUG



SEP



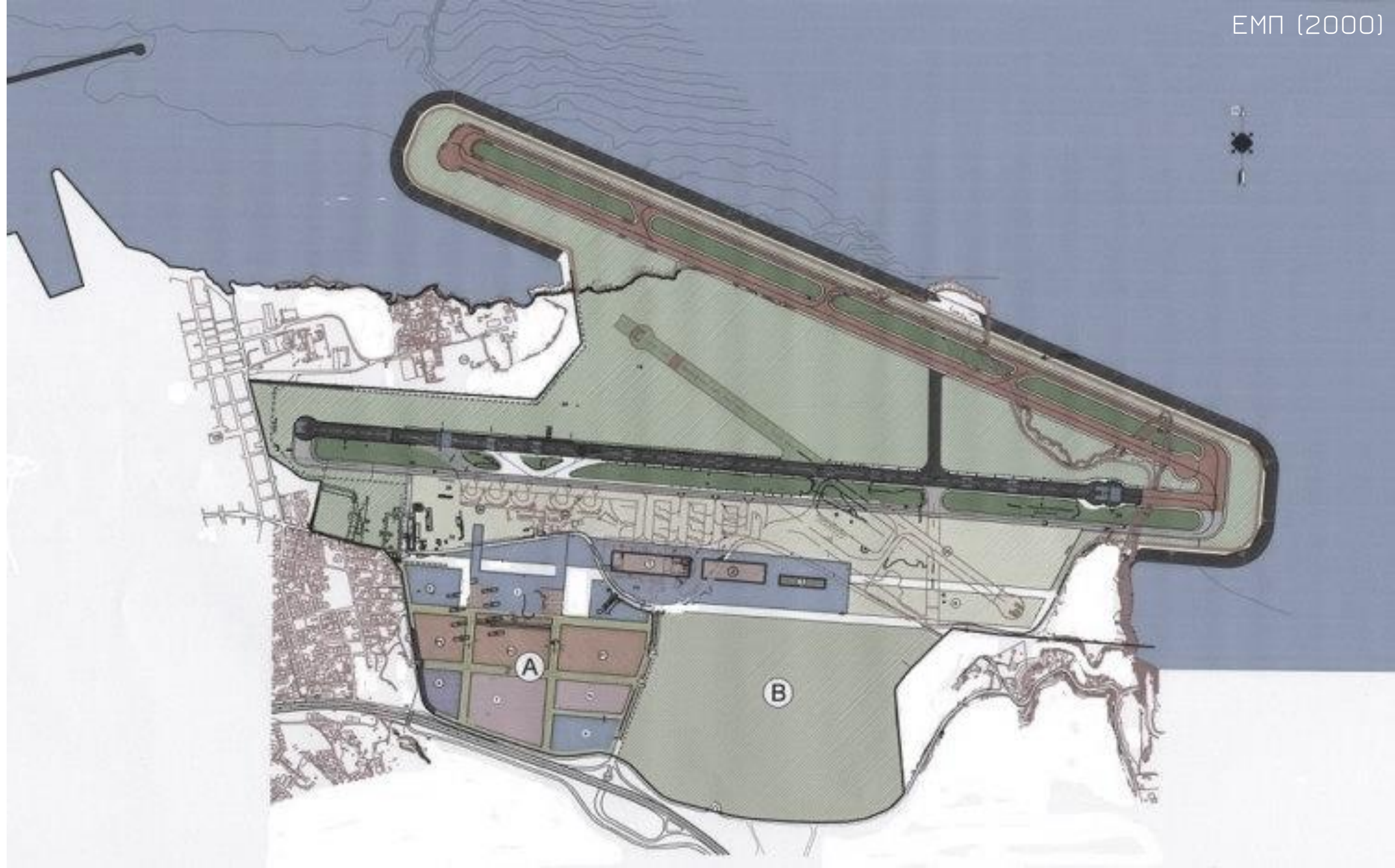
OCT

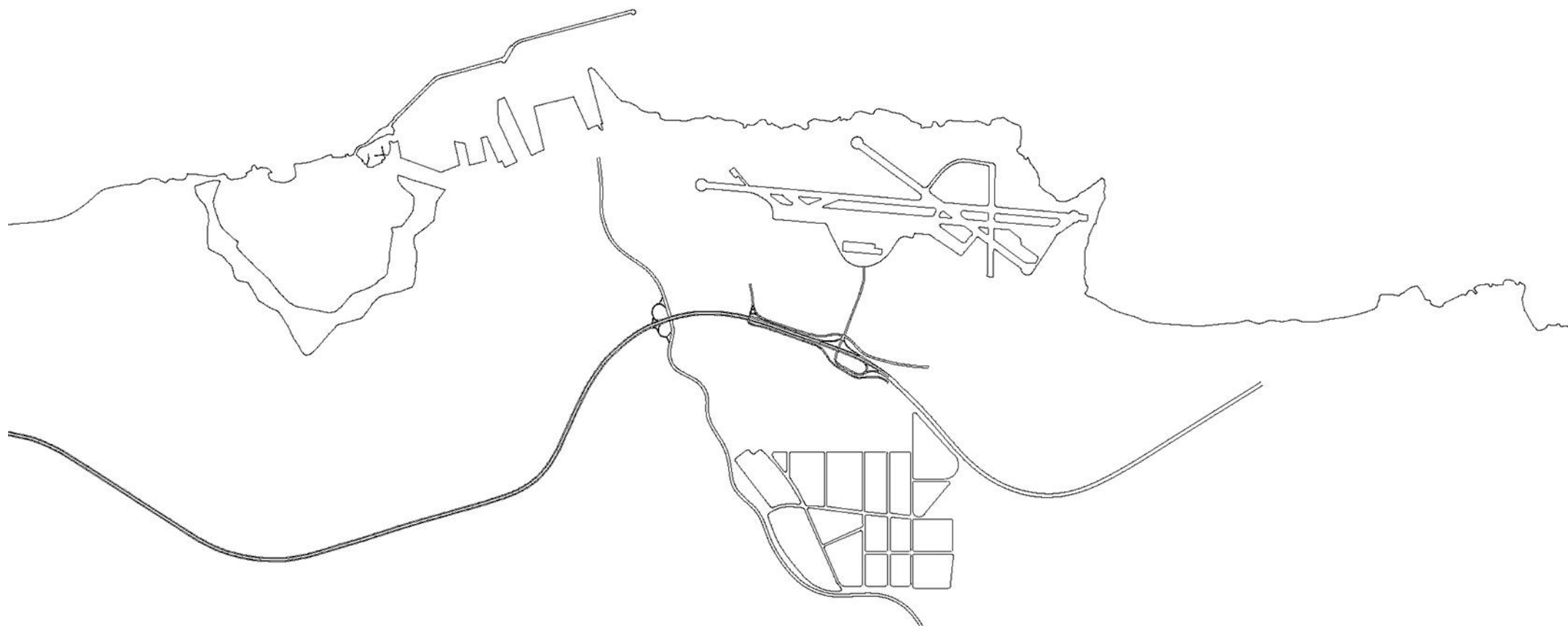


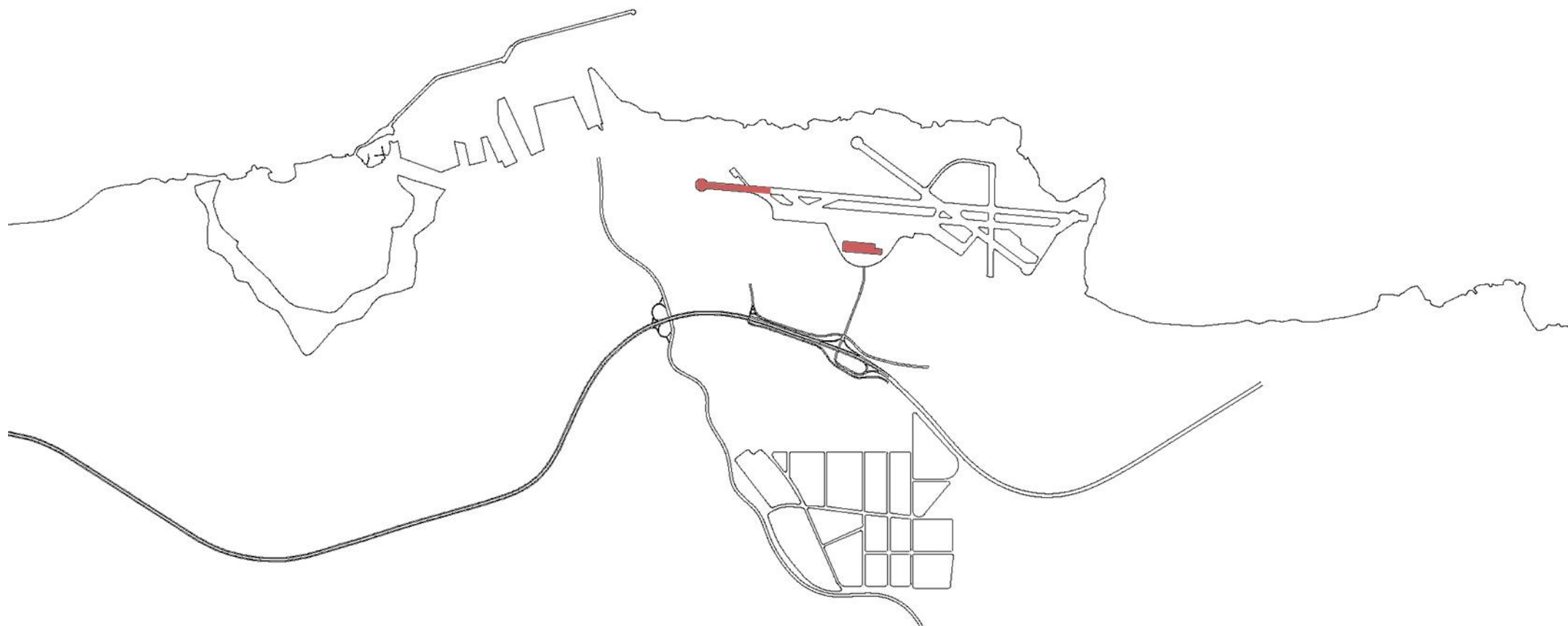
NOV

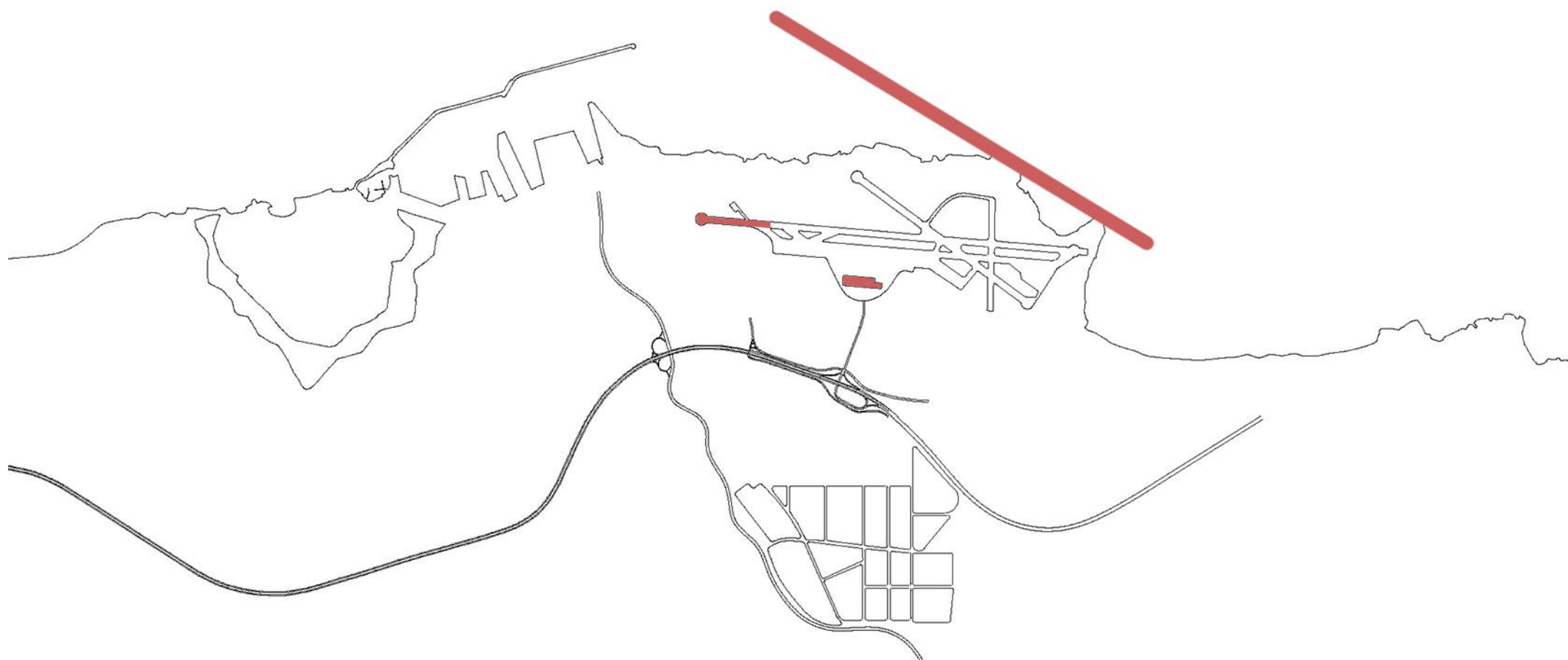


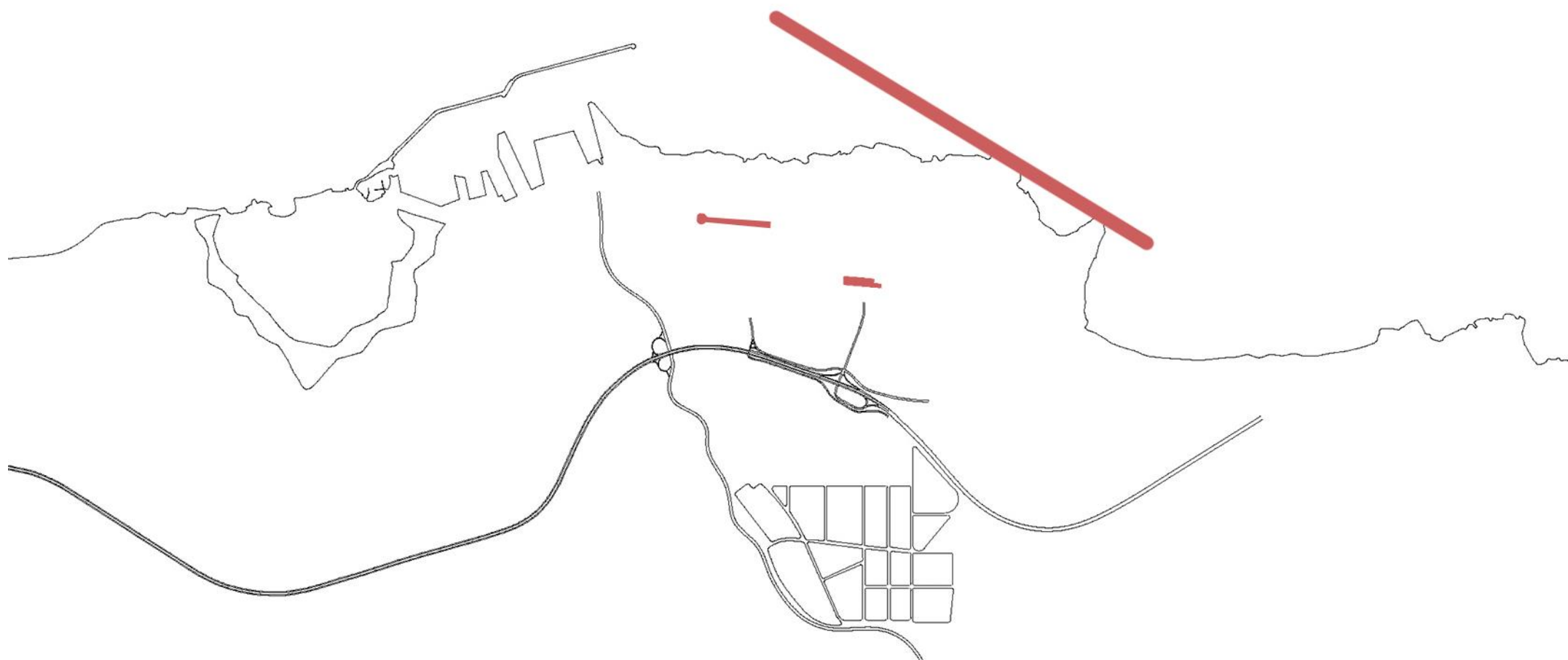
DEC

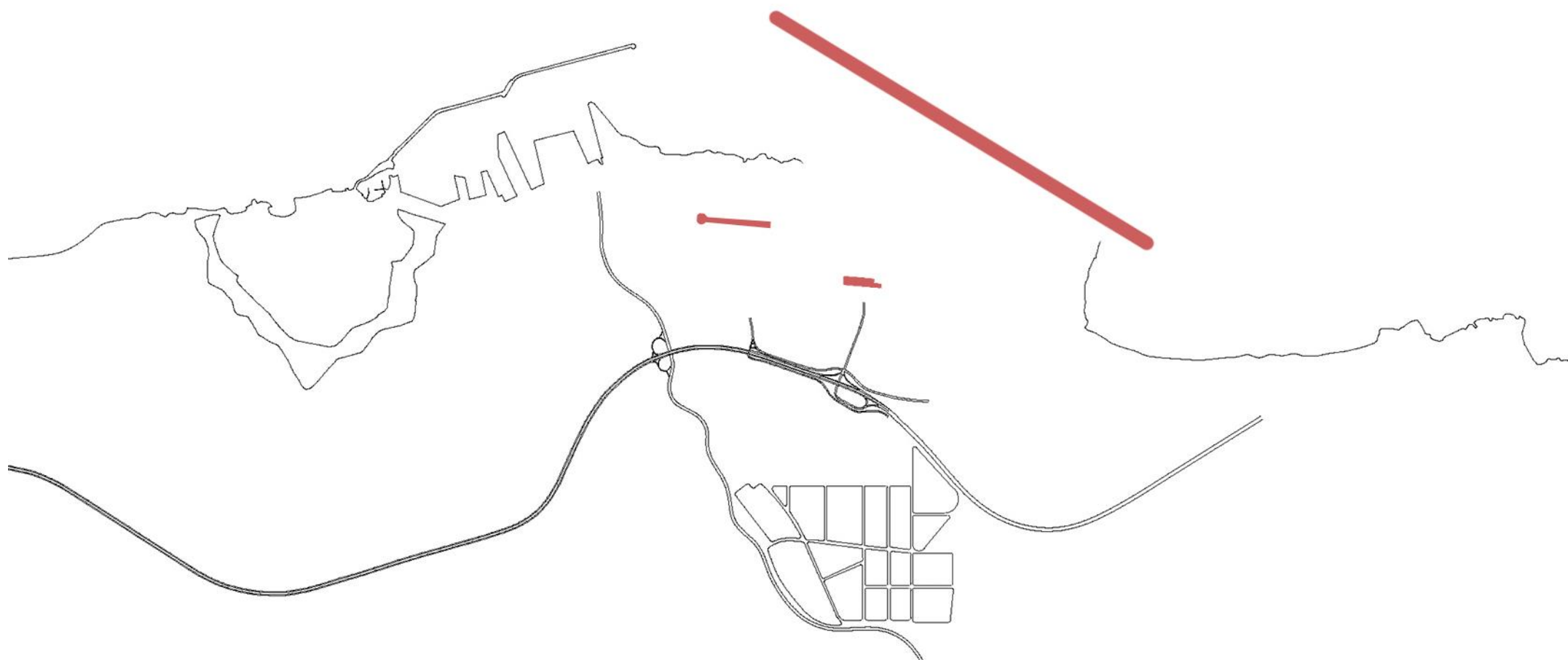












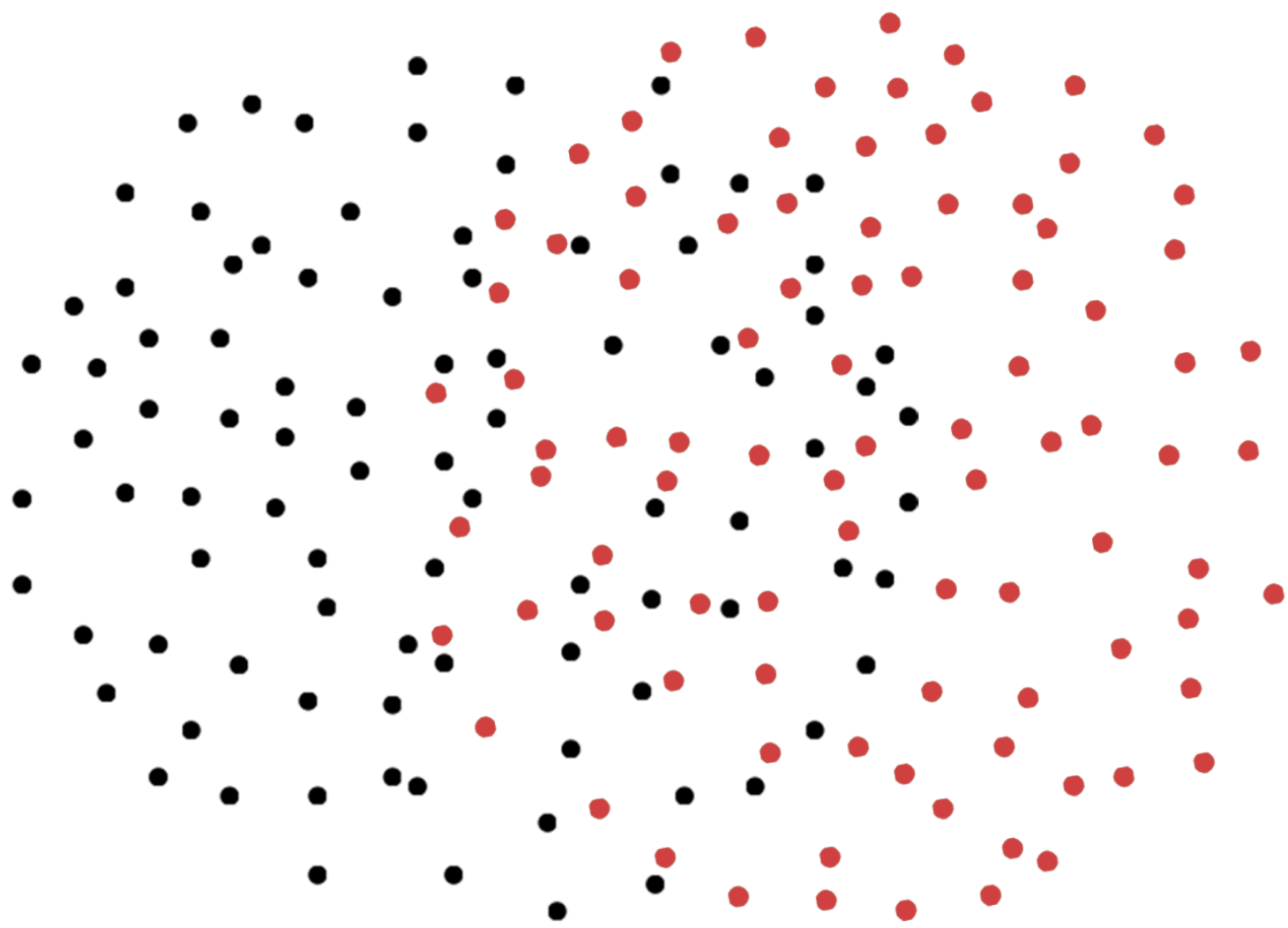
TWA FLIGHT CENTER / JFK

EERO SAARINEN, 1962



AIRSIDE

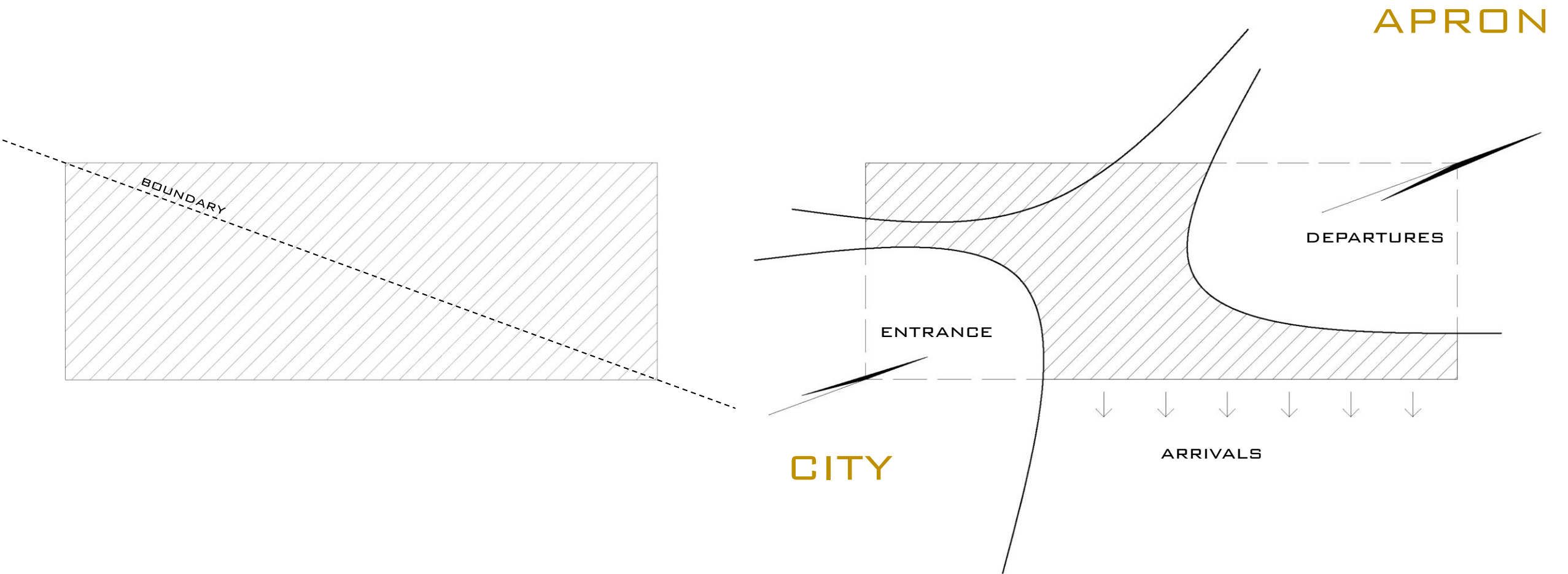
LANDSIDE



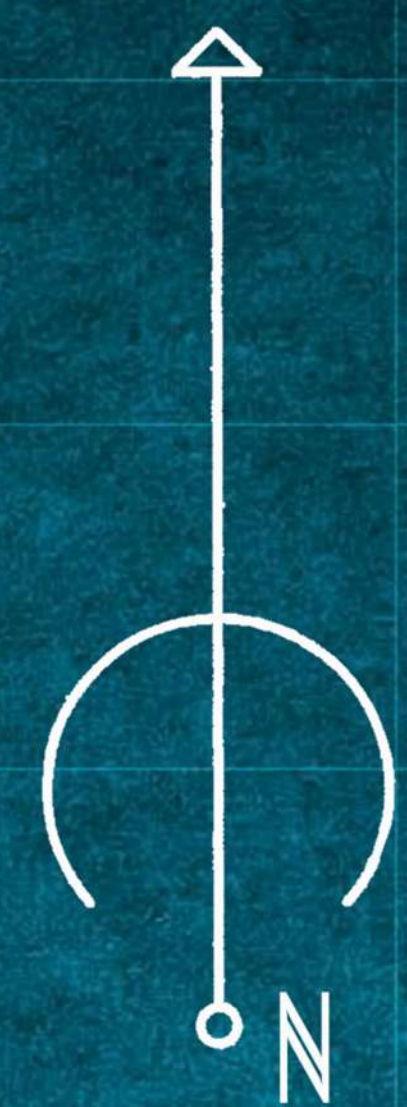
LANDSIDE

AIRSIDE

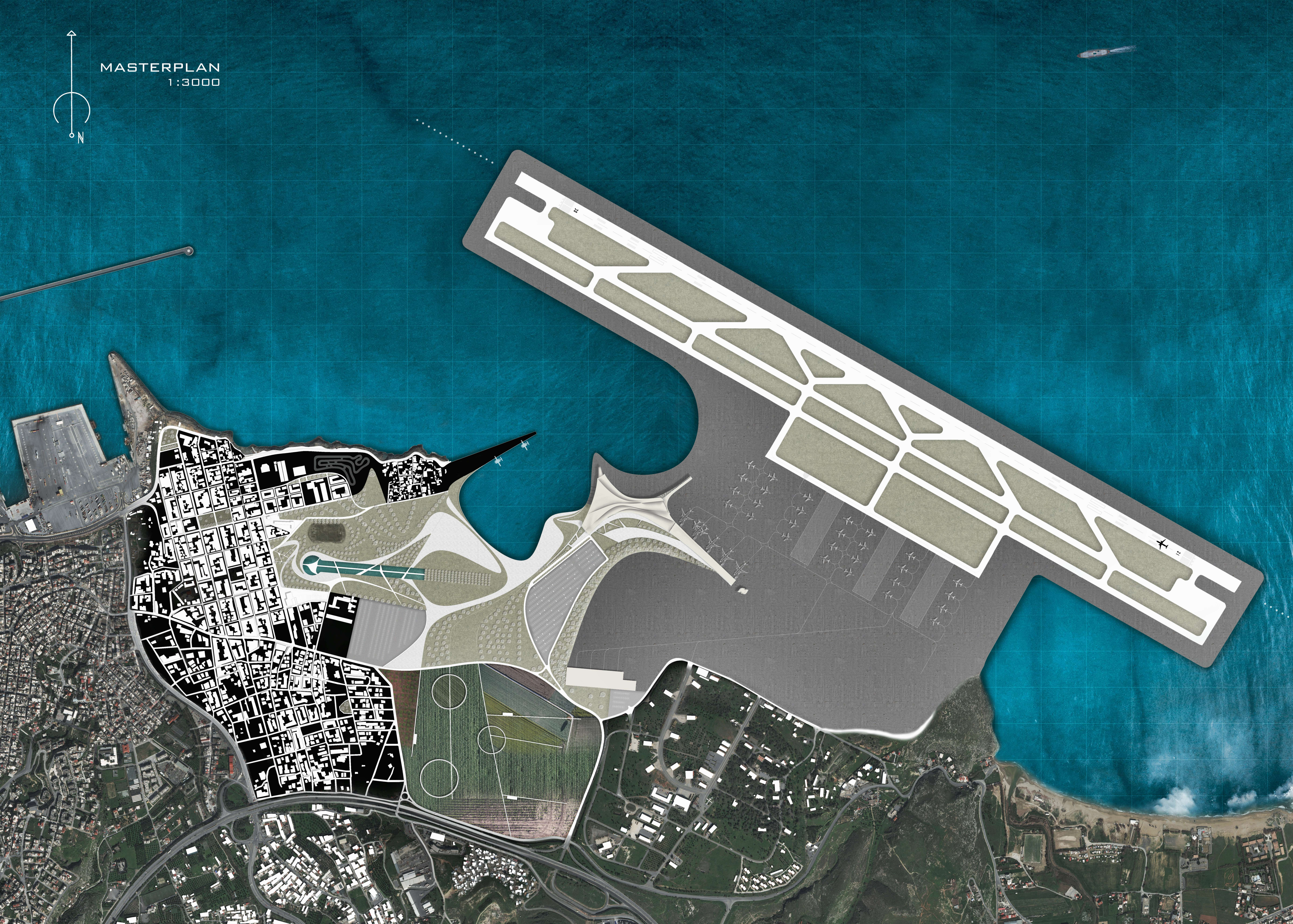


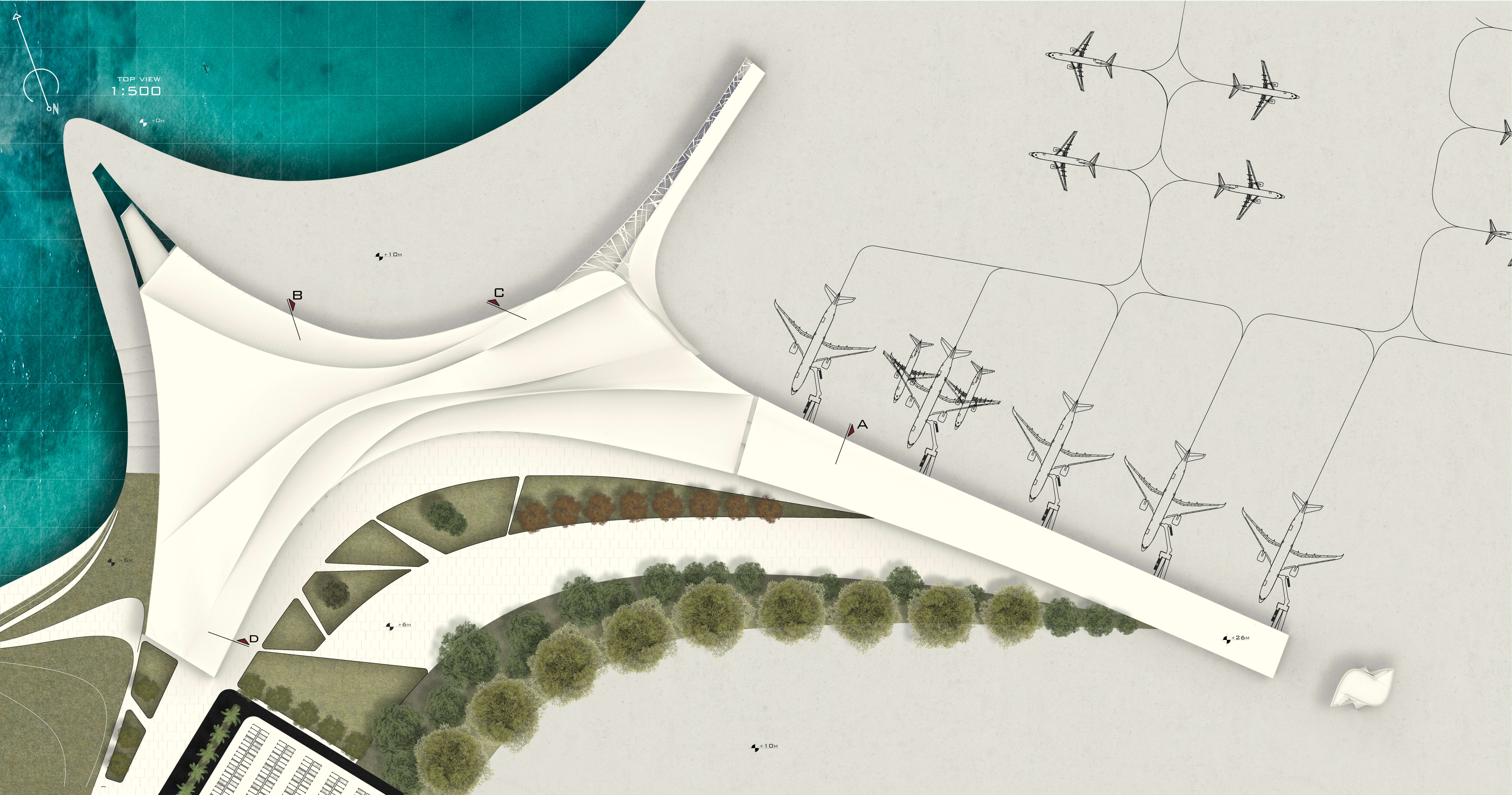






MASTERPLAN
1:3000





TOP VIEW
1:500

+0M

+10M

B

C

A

D

+6M

+26M

+10M

- 1. SECURITY CONTROL
- 2. ARRIVALS
- 3. TRANSIT AREA
- 4. ARRIVAL BELTS
- 5. INTRA SCHENGEN
- 6. EXTRA SCHENGEN
- 7. LOUNGE
- 8. ADMINISTRATION
- 9. DUTY FREE
- 10. RENTALS/CURRENCY/CAFFE/LEISURE

LEVEL 18M
1:500

+0M

+10M

+10M

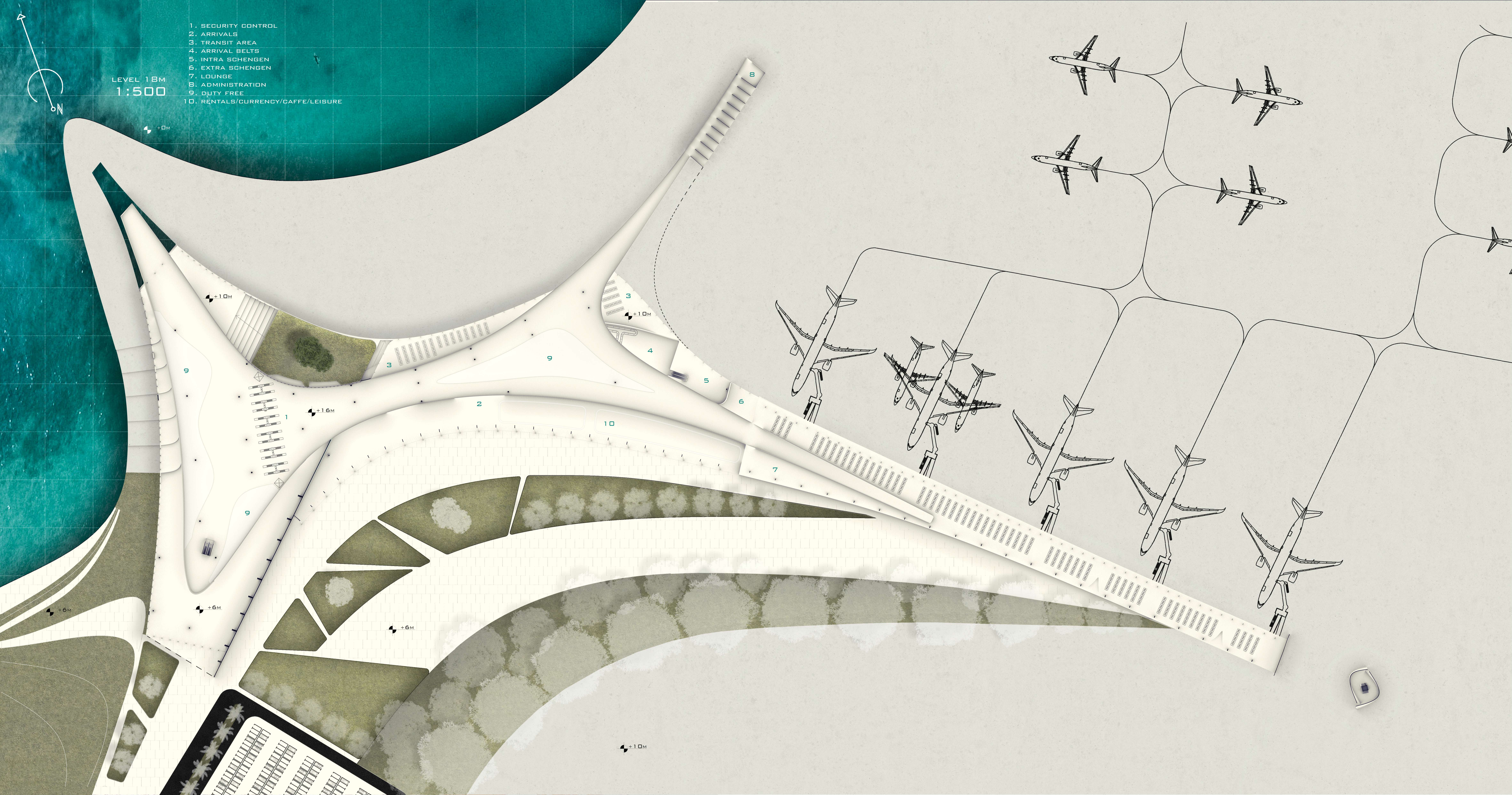
+16M

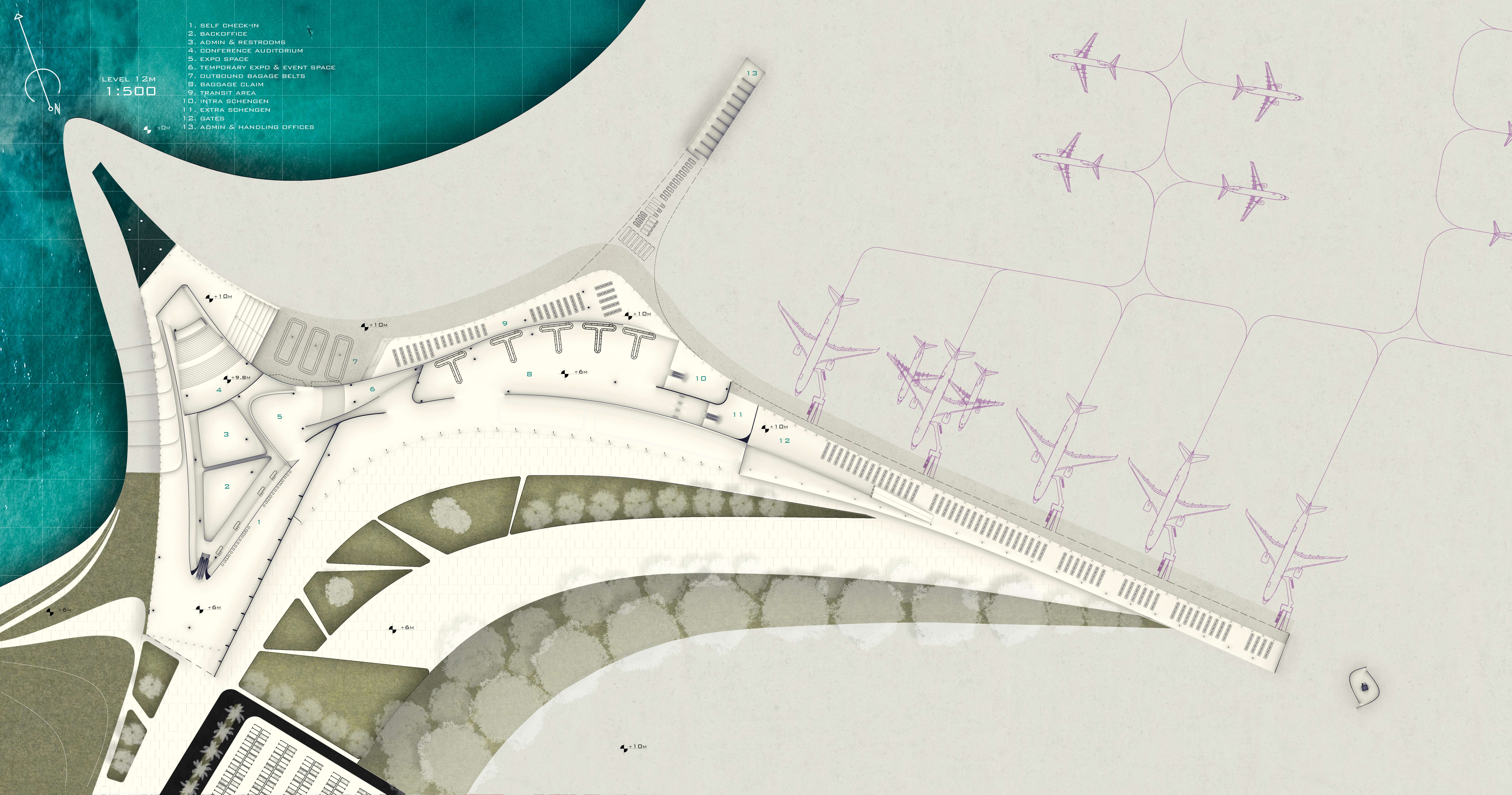
+6M

+6M

+6M

+10M





1. SELF CHECK-IN
2. BACKOFFICE
3. ADMIN & RESTROOMS
4. CONFERENCE AUDITORIUM
5. EXPO SPACE
6. TEMPORARY EXPO & EVENT SPACE
7. OUTBOUND BAGGAGE BELTS
8. BAGGAGE CLAIM
9. TRANSIT AREA
10. INTRA SCHENGEN
11. EXTRA SCHENGEN
12. GATES
13. ADMIN & HANDLING OFFICES

LEVEL 12M
1:500

+0M

+10M

+10M

+9.8M

+6M

+10M

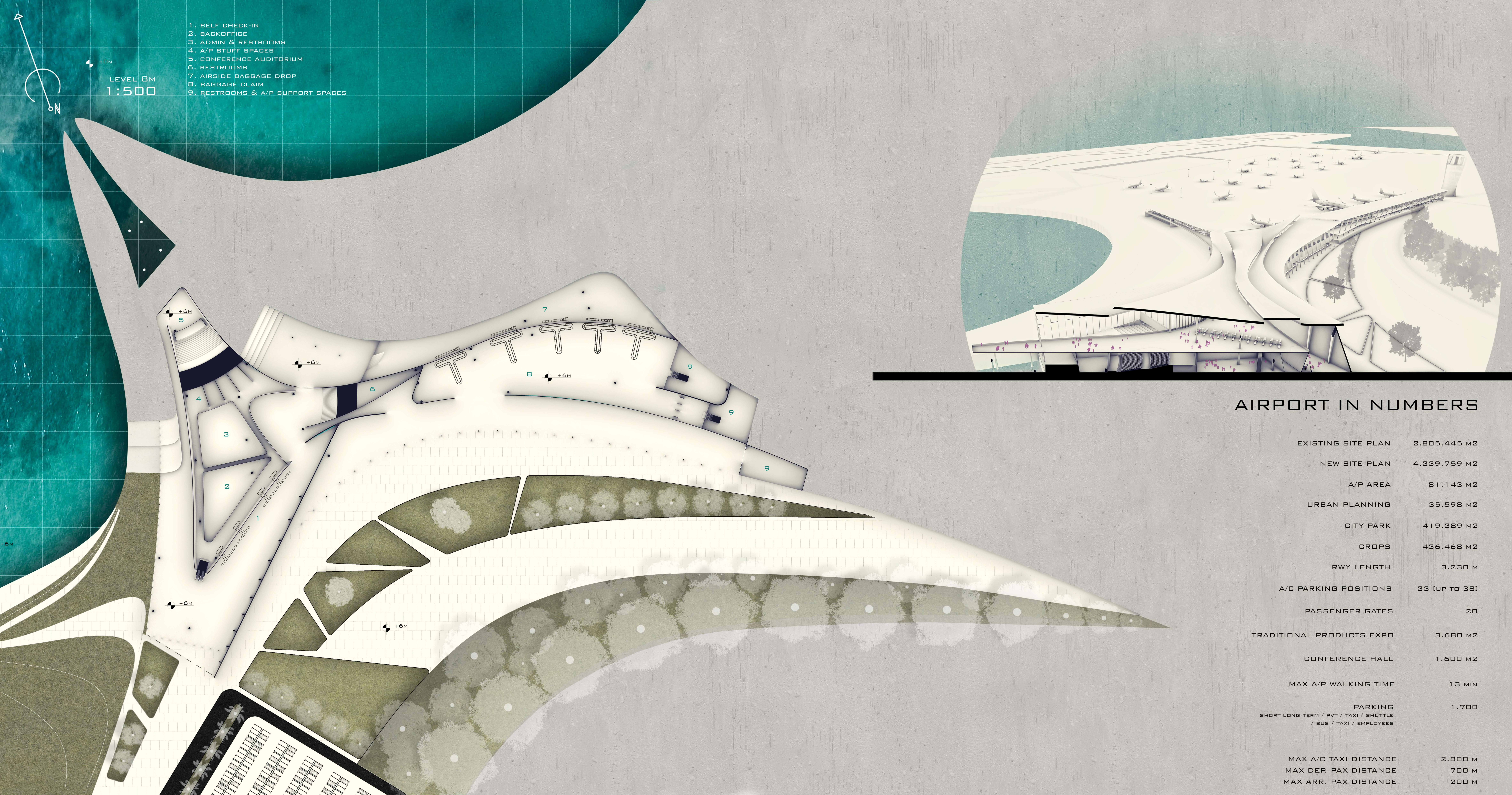
+10M

+6M

+6M

+6M

+10M

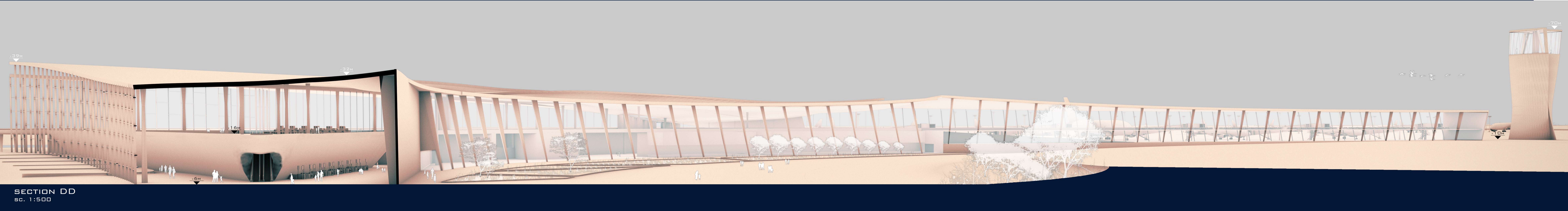
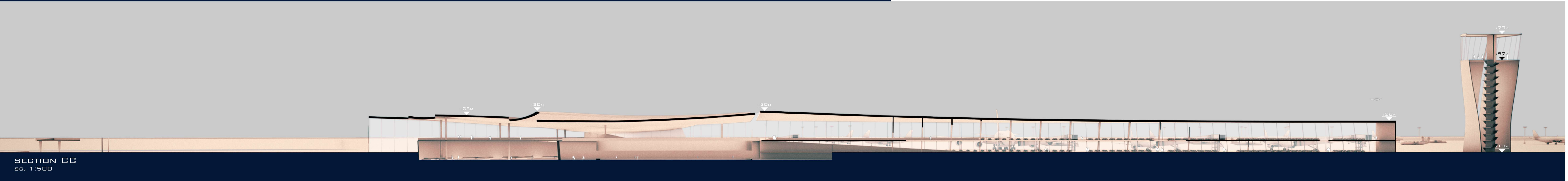
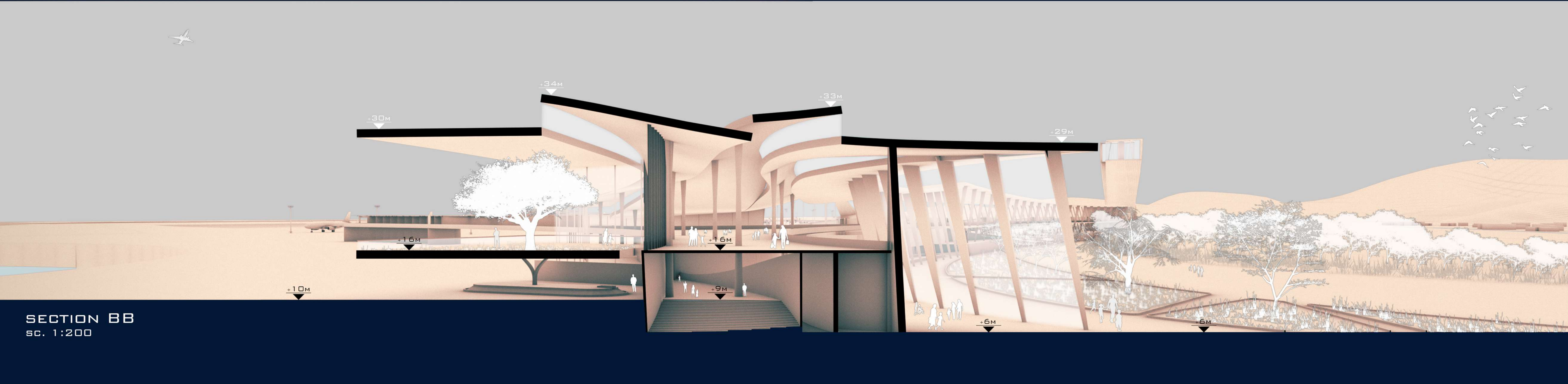
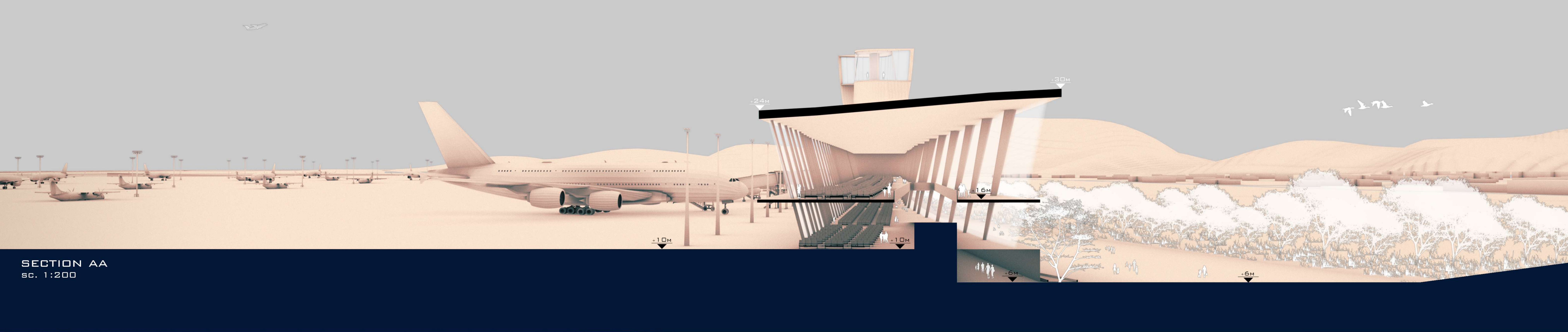


- 1. SELF CHECK-IN
- 2. BACKOFFICE
- 3. ADMIN & RESTROOMS
- 4. A/P STUFF SPACES
- 5. CONFERENCE AUDITORIUM
- 6. RESTROOMS
- 7. AIRSIDE BAGGAGE DROP
- 8. BAGGAGE CLAIM
- 9. RESTROOMS & A/P SUPPORT SPACES

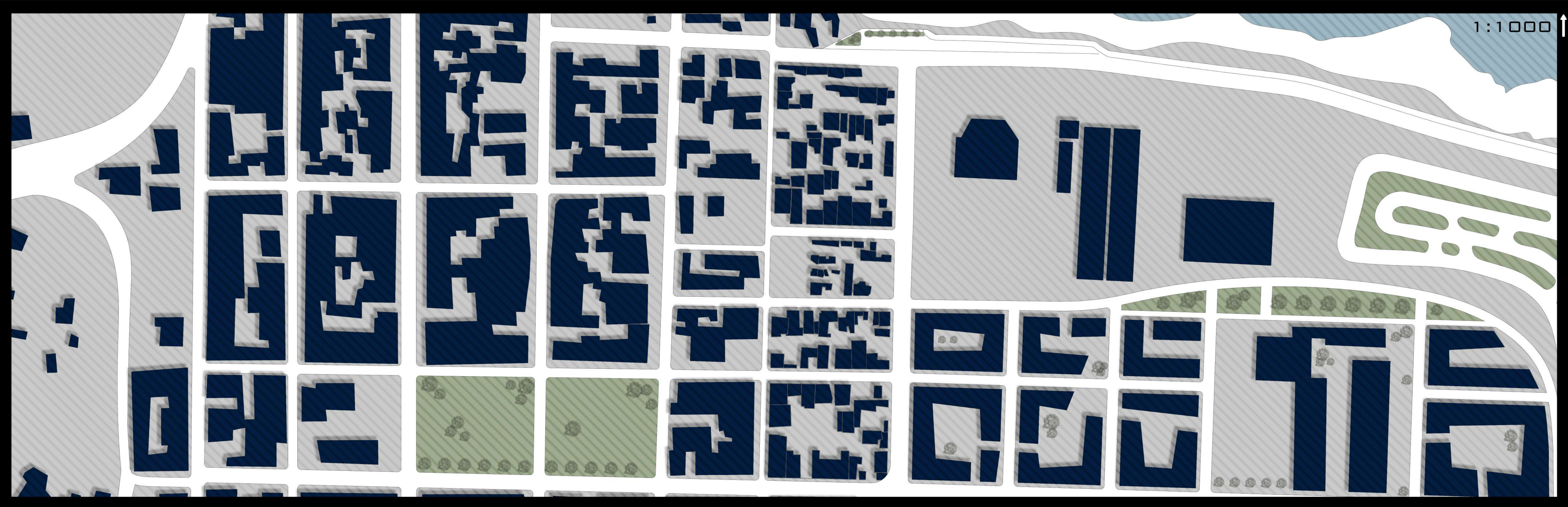
LEVEL 8M
1:500

AIRPORT IN NUMBERS

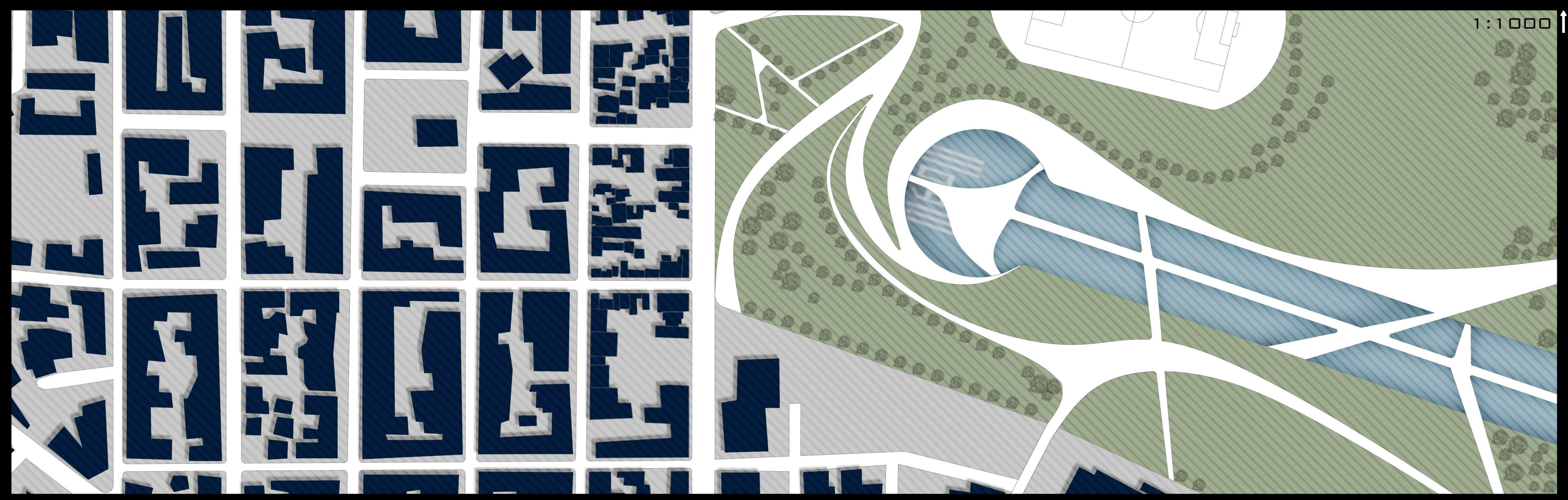
EXISTING SITE PLAN	2.805.445 M2
NEW SITE PLAN	4.339.759 M2
A/P AREA	81.143 M2
URBAN PLANNING	35.598 M2
CITY PARK	419.389 M2
CROPS	436.468 M2
RWY LENGTH	3.230 M
A/C PARKING POSITIONS	33 (UP TO 38)
PASSENGER GATES	20
TRADITIONAL PRODUCTS EXPO	3.680 M2
CONFERENCE HALL	1.600 M2
MAX A/P WALKING TIME	13 MIN
PARKING SHORT-LONG TERM / PVT / TAXI / SHUTTLE / BUS / TAXI / EMPLOYEES	1.700
MAX A/C TAXI DISTANCE	2.800 M
MAX DEP. PAX DISTANCE	700 M
MAX ARR. PAX DISTANCE	200 M



RESIDENCE



PARK



CROPS

