



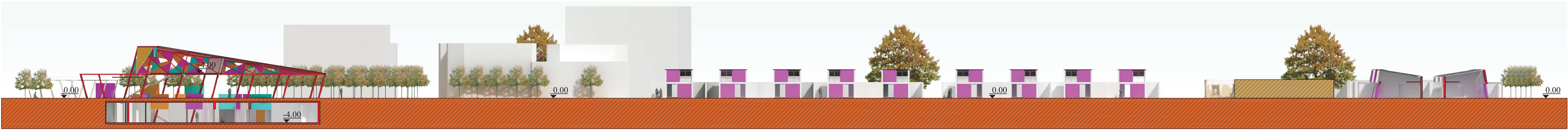
ΕΠΙΠΕΔΟ ΕΔΑΦΟΥΣ
ΚΛΙΜΑΚΑ 1/500







ΔΙΑΜΗΚΗΣ ΤΟΜΗ Α-Α



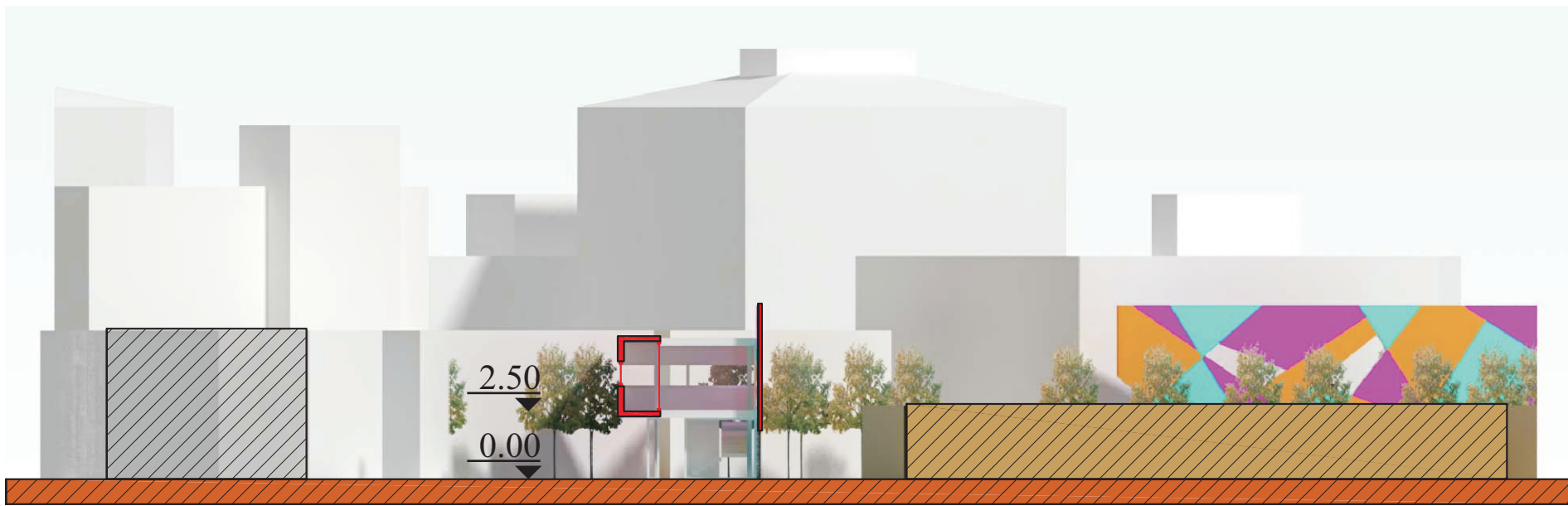
ΔΙΑΜΗΚΗΣ ΤΟΜΗ Α'-Α'



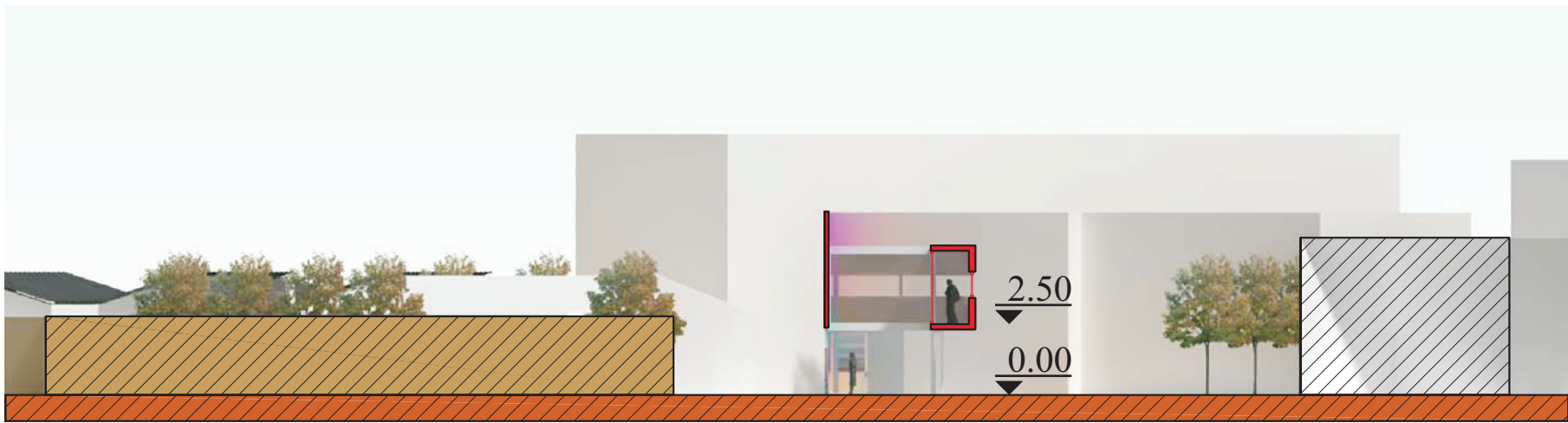
ΔΙΑΜΗΚΗΣ ΤΟΜΗ Β-Β



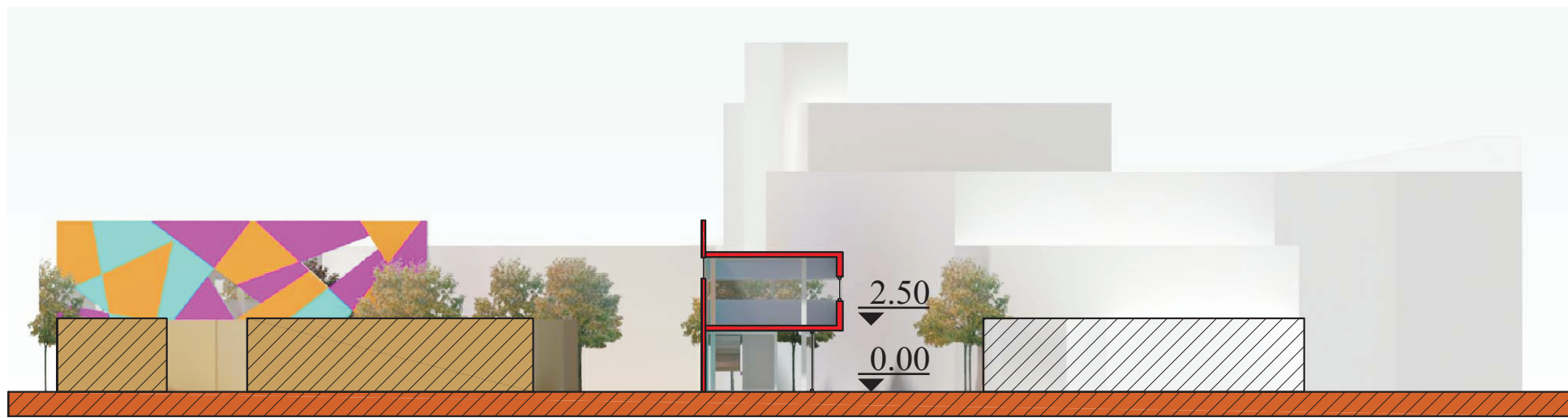
ΔΙΑΜΗΚΗΣ ΤΟΜΗ Β'-Β'



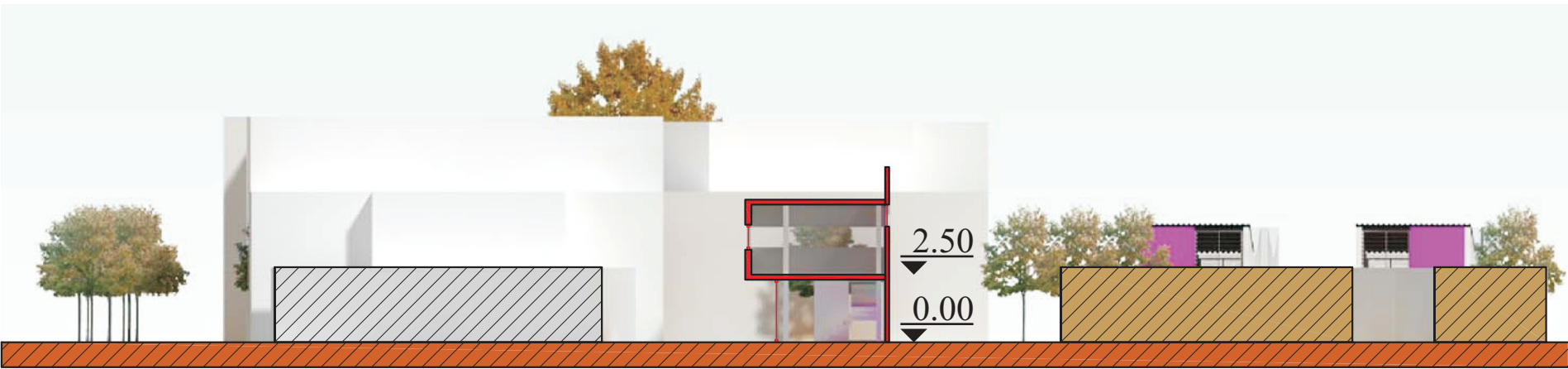
ΤΟΜΗ Γ-Γ'



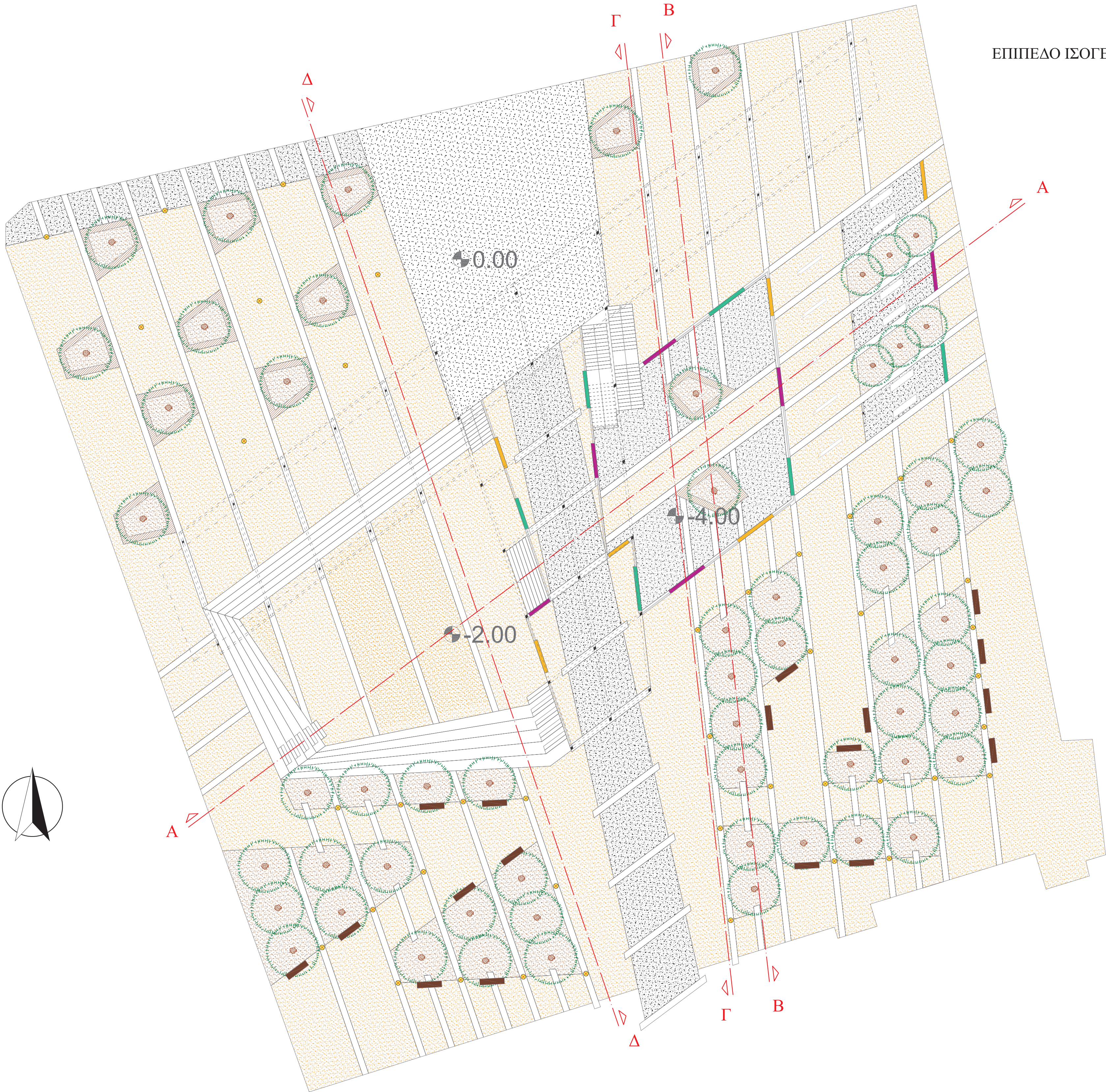
ΤΟΜΗ Τ-Τ'



ΤΟΜΗ Δ-Δ'



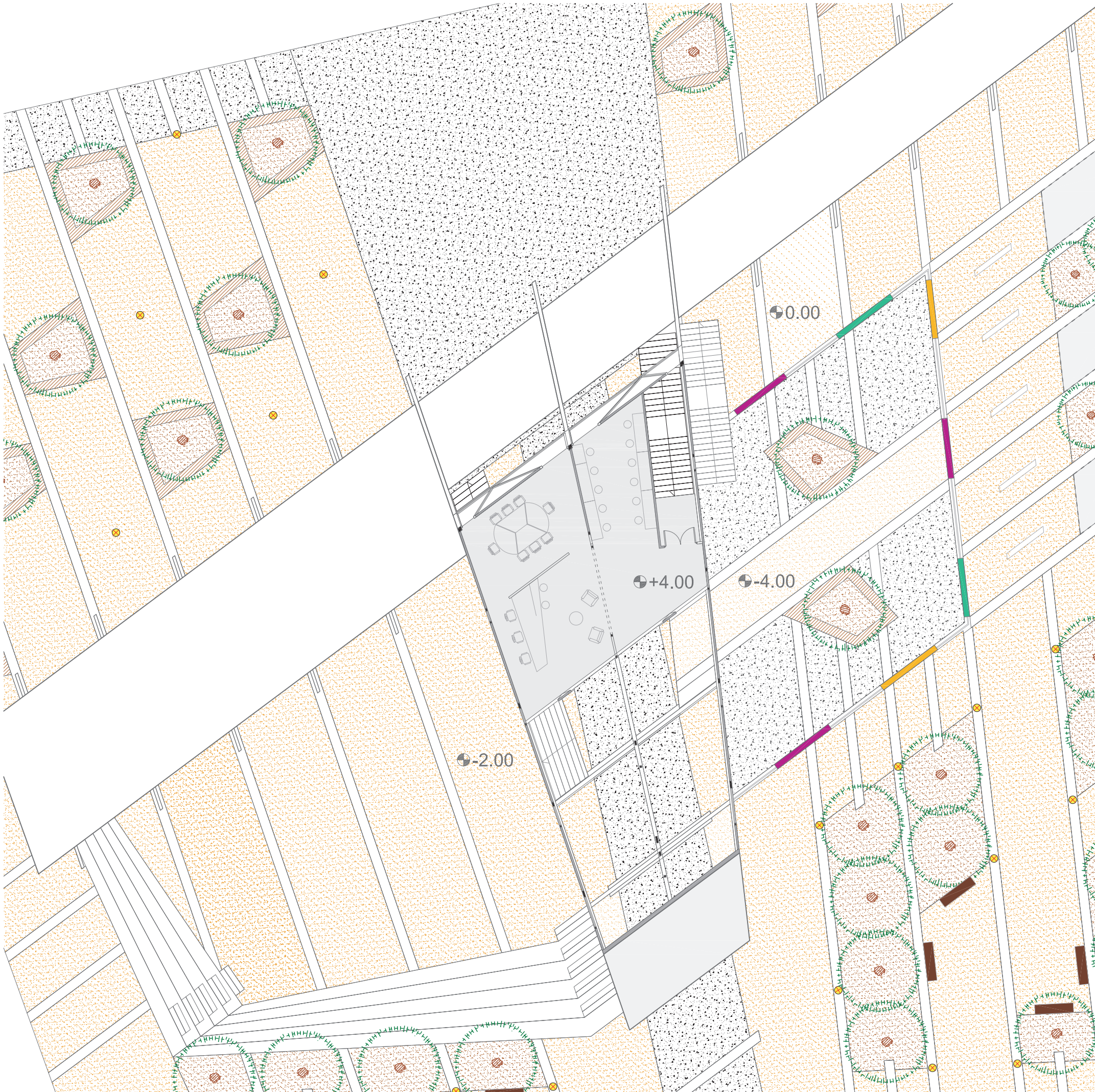
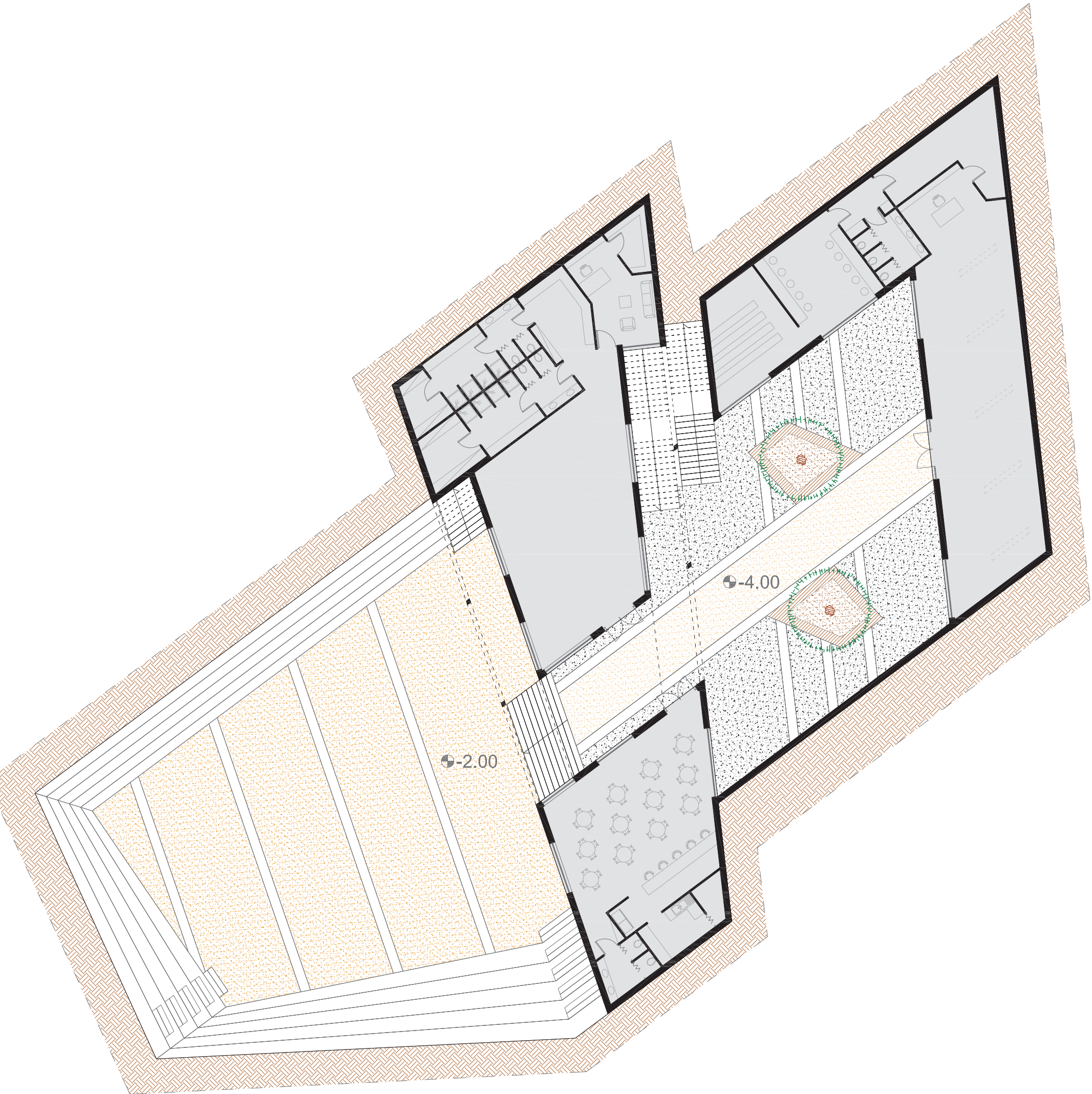
ΤΟΜΗ Δ'-Δ'



ΕΠΙΠΕΔΟ ΙΣΟΓΕΙΟΥ

ΕΠΙΠΕΔΟ ΥΠΟΓΕΙΟΥ

ΕΠΙΠΕΔΟ ΟΡΟΦΟΥ

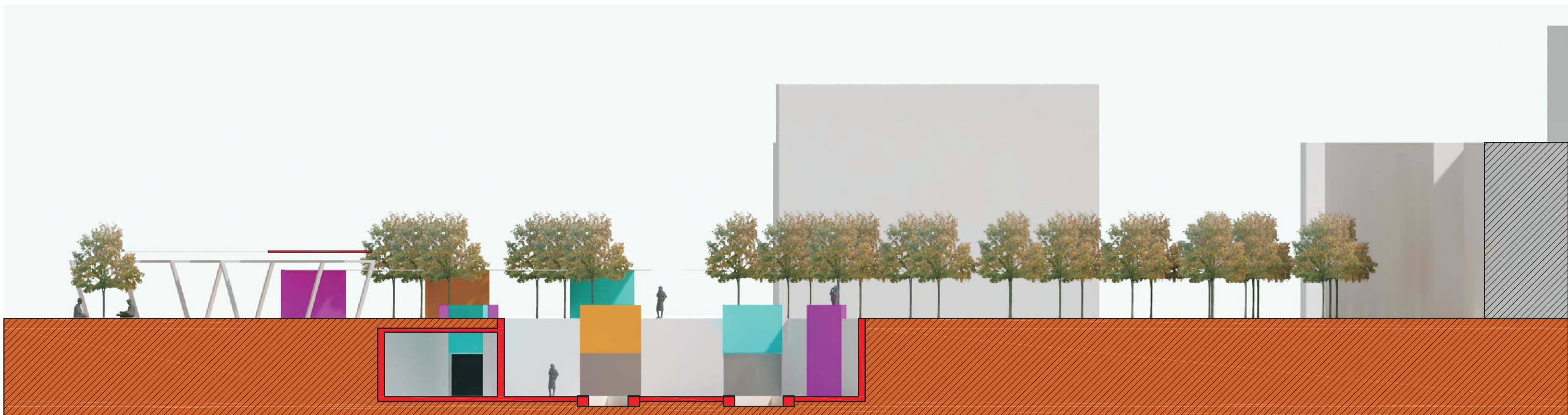




ΝΟΤΙΑ ΟΨΗ-TOMH AA



ΒΟΡΙΑ ΟΨΗ



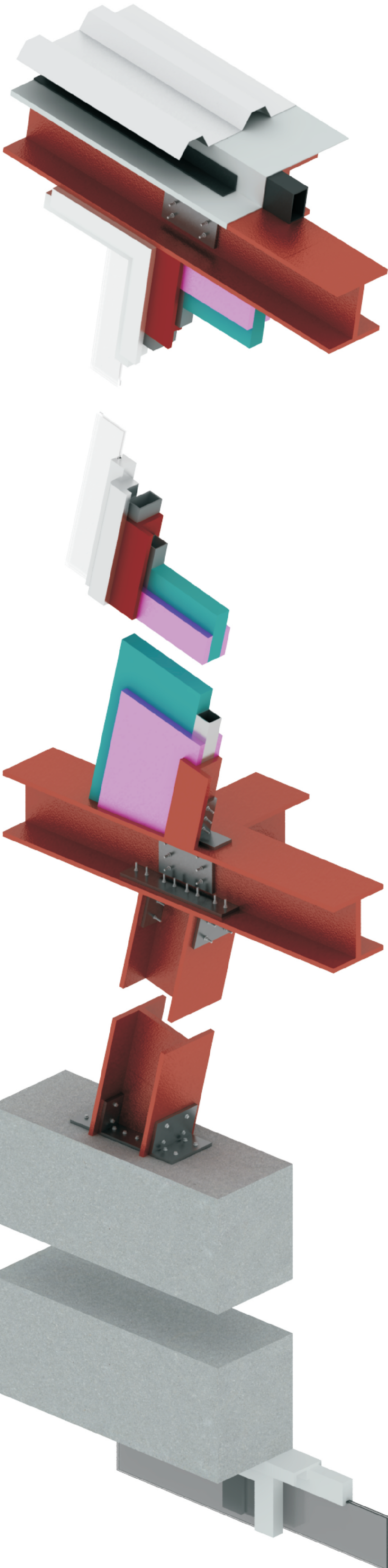
ΔΥΤΙΚΗ ΟΨΗ B-TOMH BB



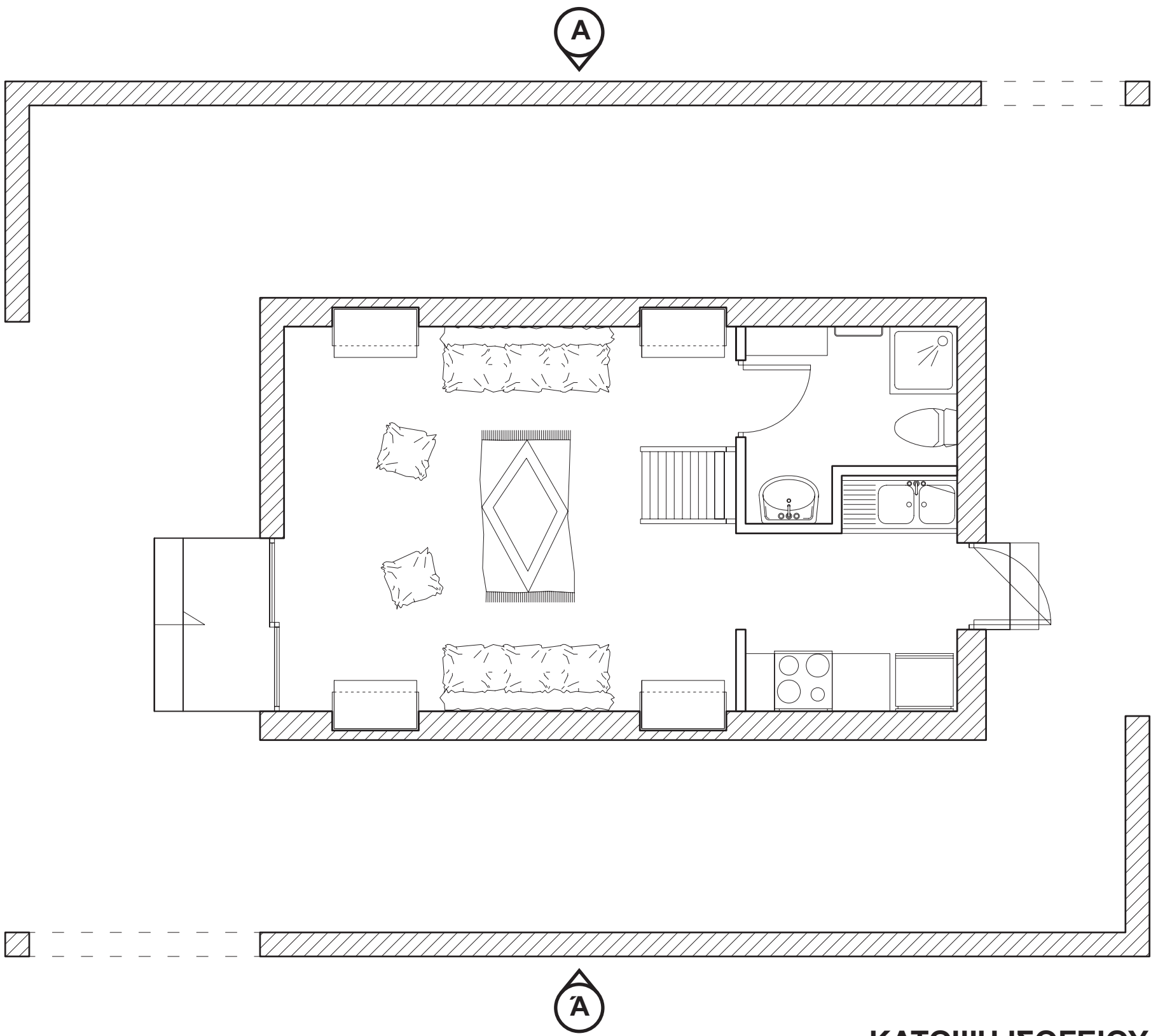
ΑΝΑΤΟΛΙΚΗ ΟΨΗ-TOMH ΓΓ



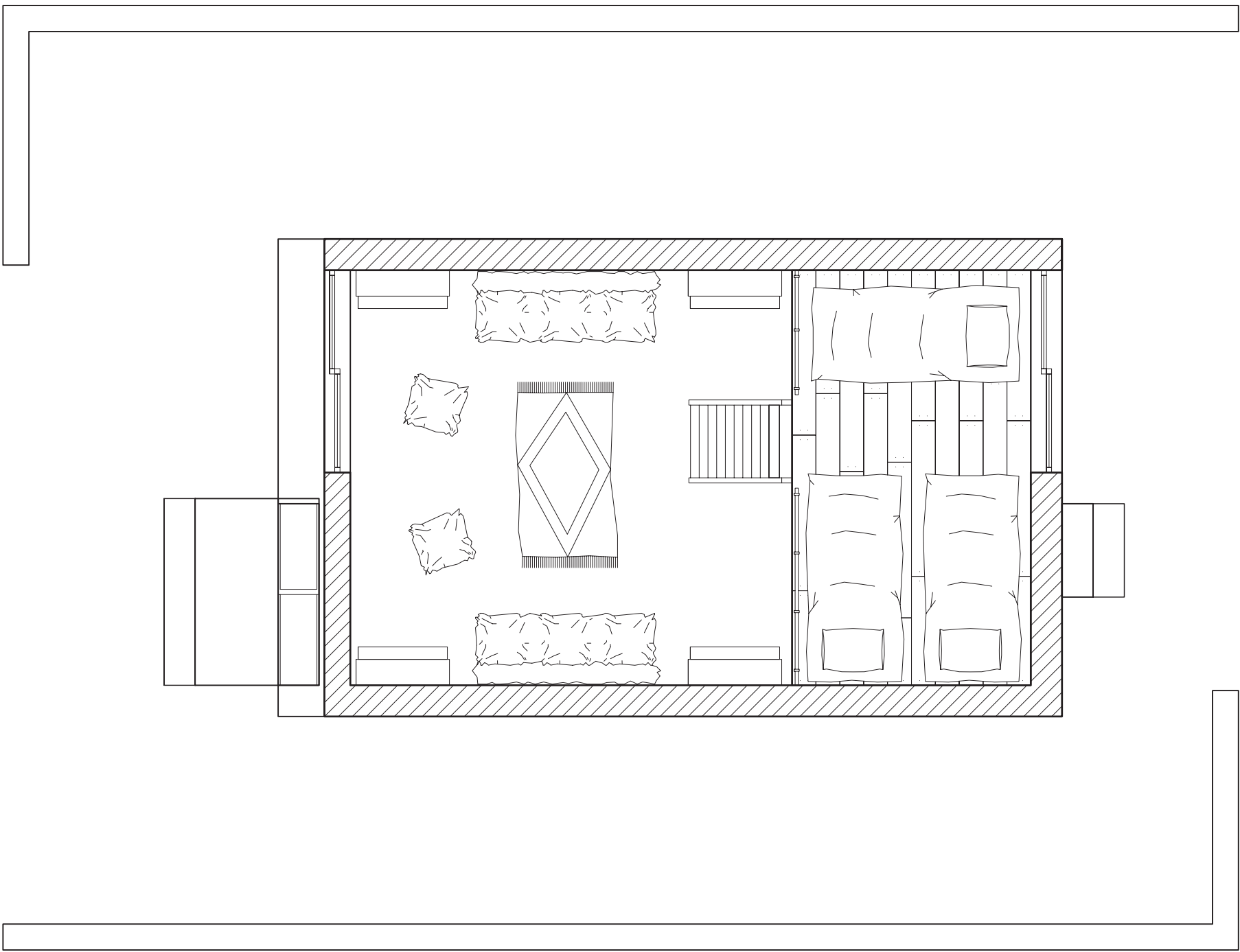
ΔΥΤΙΚΗ ΟΨΗ A-TOMH ΔΔ



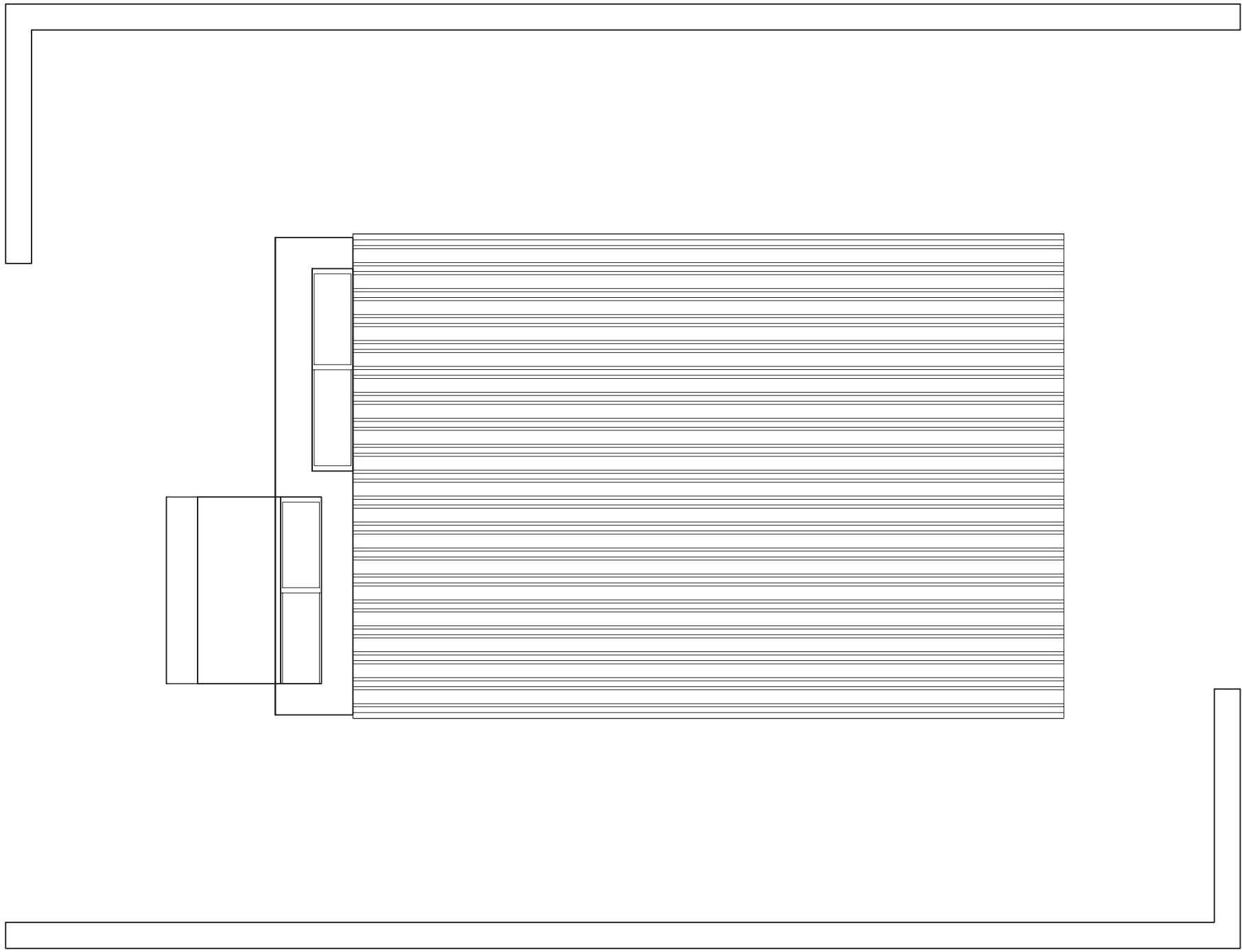
ΑΞΟΝΟΜΕΤΡΙΚΗ ΛΕΠΤΟΜΕΡΕΙΑ ΚΑΤΑΣΚΕΥΗΣ



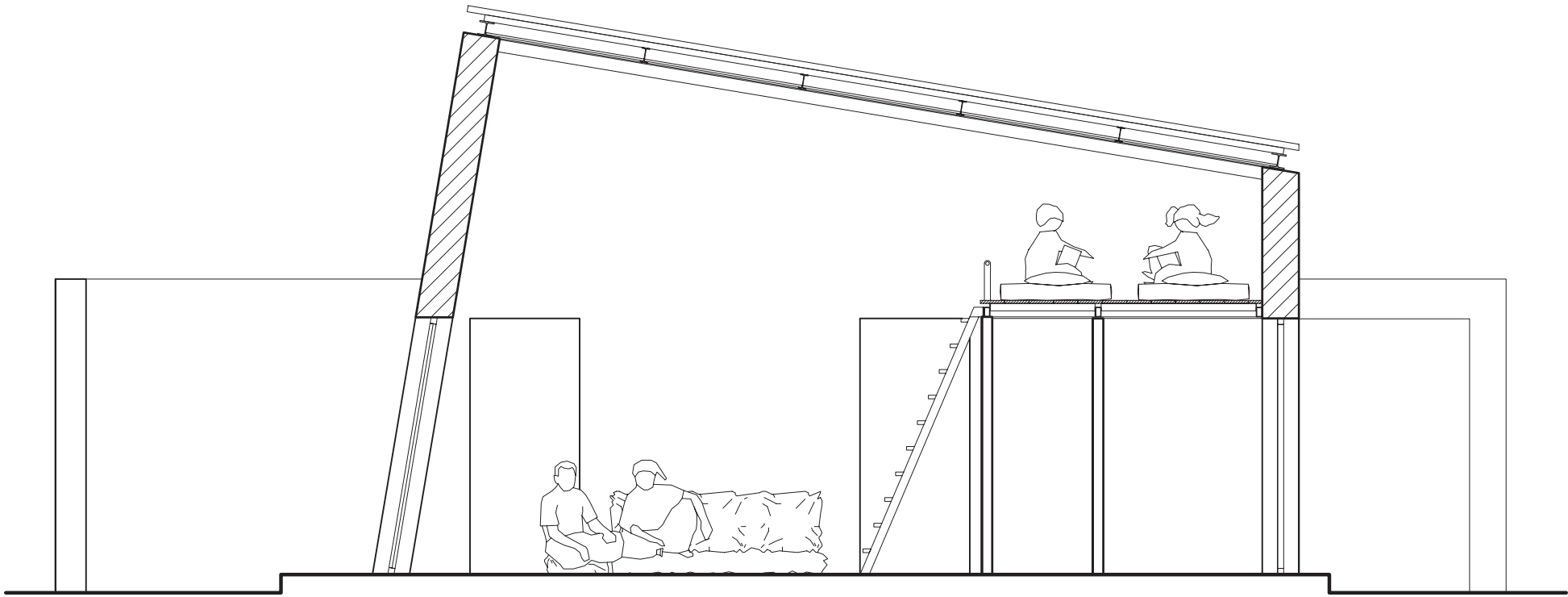
ΚΑΤΟΨΗ ΙΣΟΓΕΙΟΥ



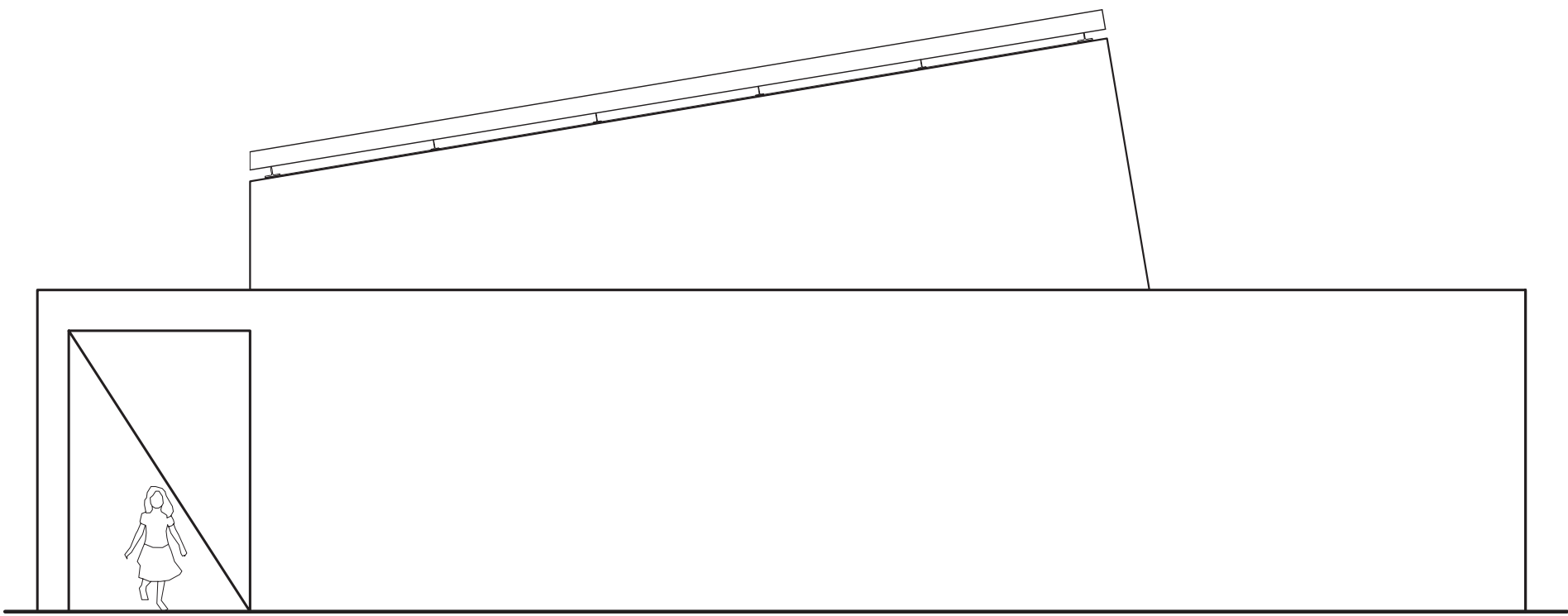
ΚΑΤΟΨΗ ΠΑΤΑΡΙΟΥ



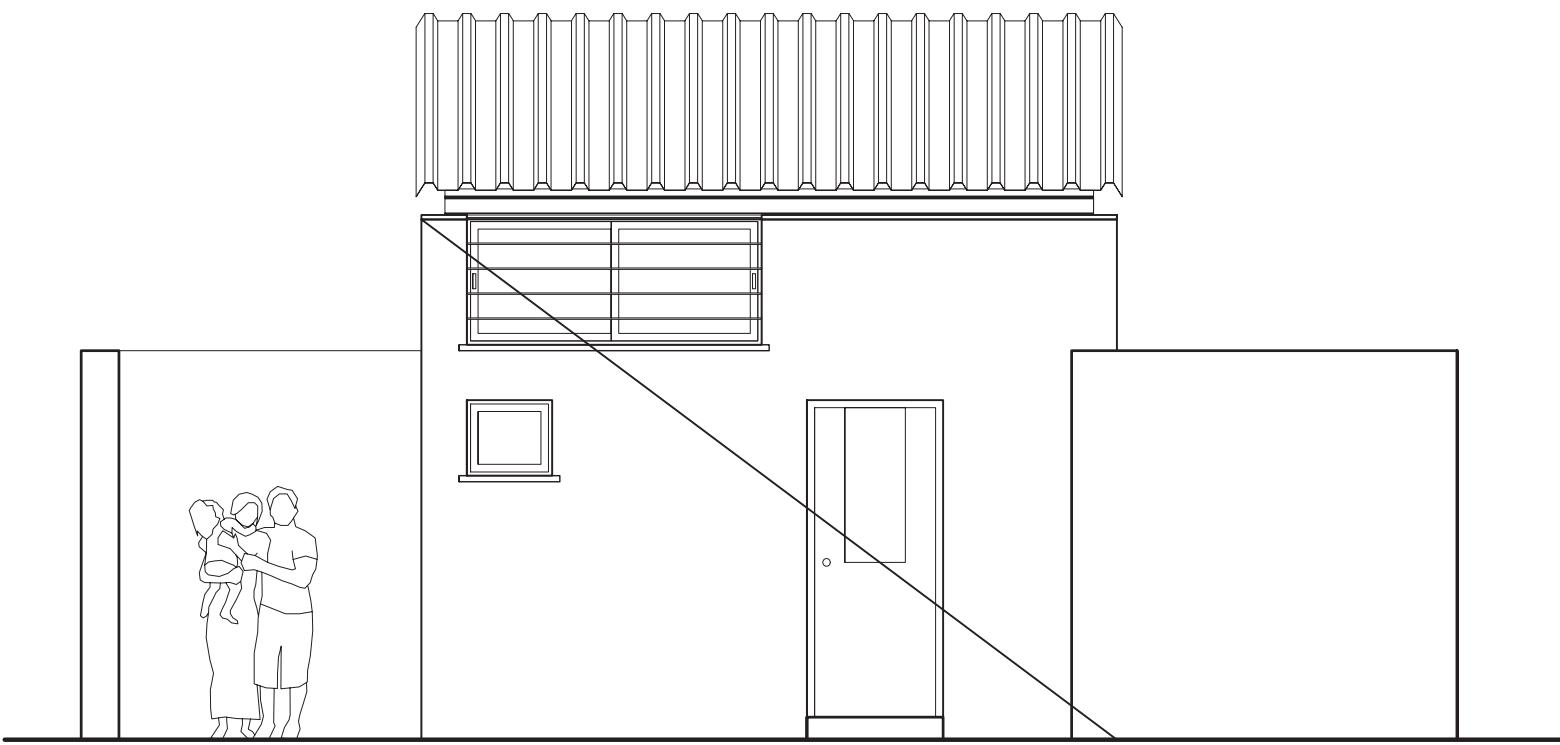
ΚΑΤΟΨΗ ΔΩΜΑΤΟΣ



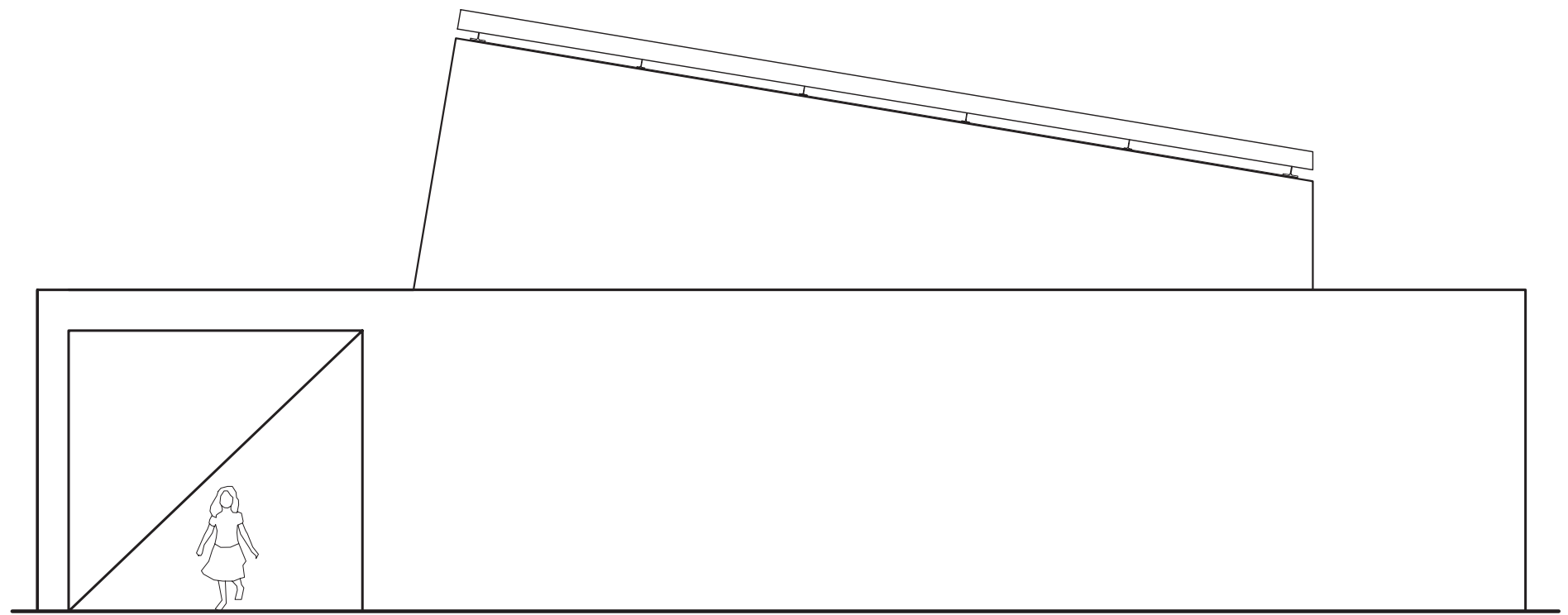
ΤΟΜΗ ΑΑ



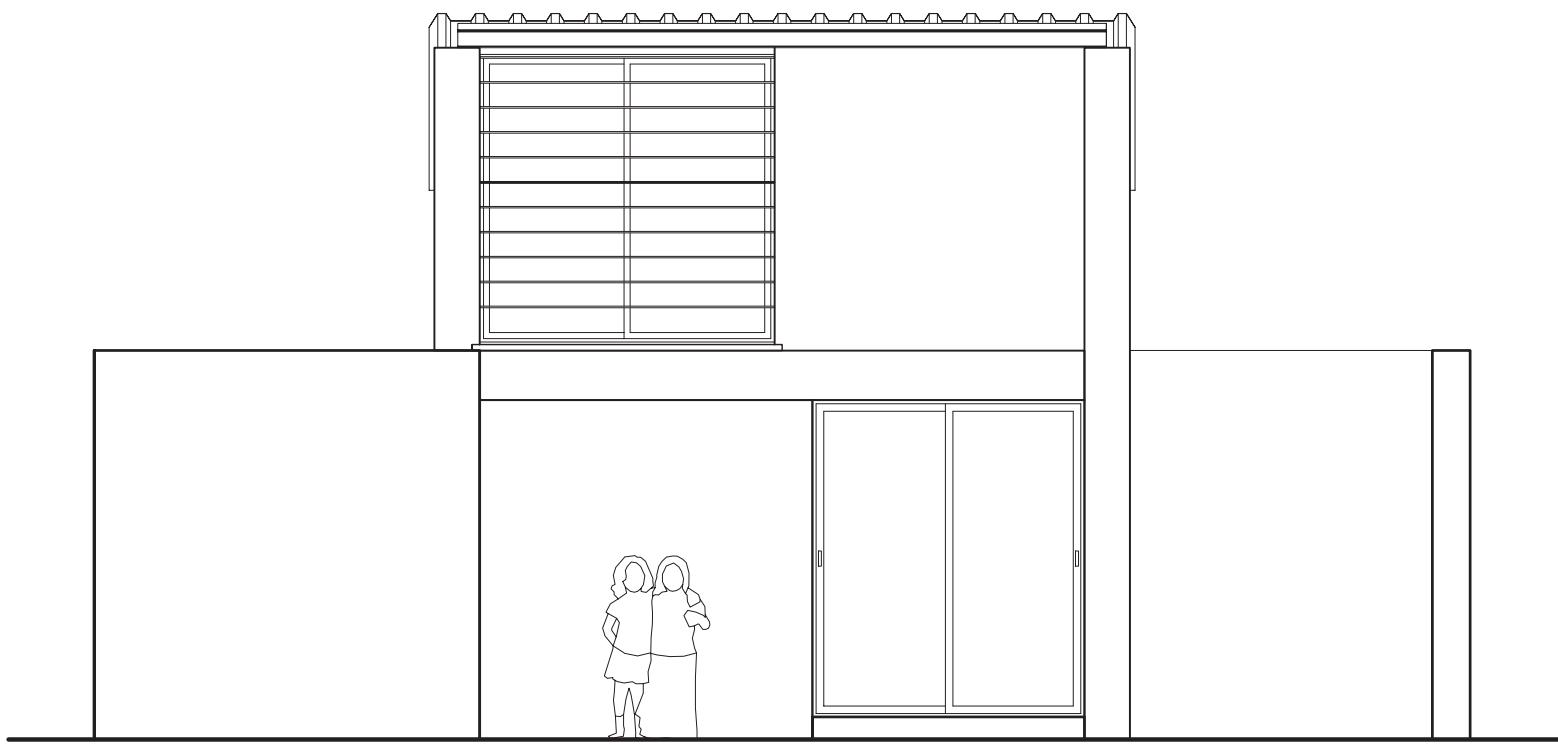
ΠΛΑΓΙΑ ΟΨΗ Α



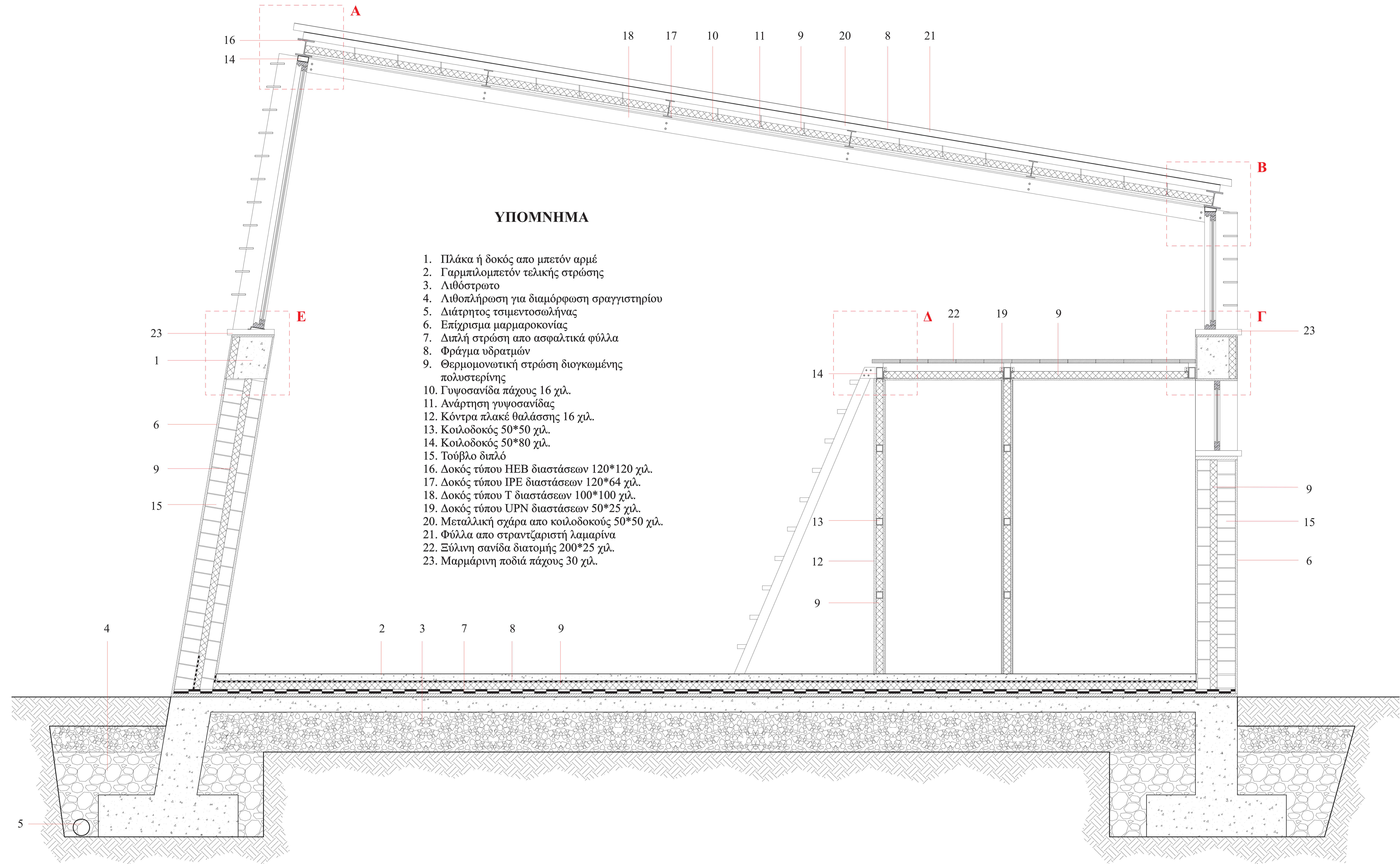
ΚΥΡΙΑ ΟΨΗ



ΠΛΑΓΙΑ ΟΨΗ Α



ΠΙΣΩ ΟΨΗ



Α Ν Α Λ Υ Σ Η Κ Α Τ Α Σ Κ Ε Υ Η Σ

